



SEAT Alhambra



Where to next?

The world doesn't stand still. And neither do you. Every challenge is an opportunity to try something new. Be curious. Keep pushing forward.

It's the way we live too. SEAT is a brand born in Barcelona. Inspired by colour and light. Fuelled by creative energy and optimism. We're here to make it easier for you to move the way you want to. So, where shall we go?

At SEAT we believe that moving should be effortless.
For everyone.

Cars that you want to drive because they look great
and feel even better. Large SUVs. e-HYBRID. Electric
scooters and bikes. Mobility solutions to make moving
through your city smarter. Brighter. More enjoyable.
And above all, easier.

Moving made easy.



01 Your Alhambra.

10 Exterior design
12 Interior design
14 Technology
16 Safety

02 Your way.

20 FR-Line
24 Xcellence
28 Style
32 Wheels
34 Colours
36 Upholstery

03 Your accessories.

40 Transport
44 Exterior
46 Interior
48 Protection
50 Safety

04 At your service.

54 SEAT Care





Whatever the size, every family needs backup. Safety, comfort and technology, with zero compromises. The little things that make a big difference. Because these aren't just roads, they're memories. The SEAT Alhambra. Get ready to turn journeys into stories.

The memories
start here.



Fit for far-out adventure. The SEAT Alhambra's substantial size and electric sliding rear doors make slipping out for your next big family trip simple. Add to this, cool chrome lines and full LED headlights and you've got safe and stylish access to everything you're ever going to need.

A world of
possibilities.

Every family's different. There's no one size fits all. Except when you've got 2,430 litres of room on the inside, with a spacious boot for everyone's stuff. And 32 ways of configuring the seats give you all the flexibility you need, for whatever life throws at you.

Room to grow?
You've got it.





Social media. Entertainment. Maps. The world is in your pocket. And with Full Link technology, your SEAT Alhambra gets seamlessly connected too. Featuring MirrorLink™, Apple CarPlay™ and Android Auto™, your 6.3" colour touchscreen lets you control your world. Smart just got simpler.

Smartphone?
Smarter car.



Safer is better.

Nothing matters more than their safety. Key elements like Front Assist and the seat belt reminder for 5 seats come as standard in all models. Want more? DSG deliver more responsive control, while Blind Spot Detection alerts you to unseen obstacles. Multifunctional camera technologies like Lane Assist and Traffic Sign Recognition actively monitor your surroundings and respond or alert you accordingly. Tiredness Recognition helps you stay alert, and with the comprehensive airbag system, everyone is protected. Think about it once, and then know it's taken care of.



It's all about the choices you make. The SEAT Alhambra makes sure you've got everything you need, for whatever you choose. Whether it's a performance boost, added convenience, or just some extra style and comfort, you've got what it takes. All you need to do is take it.

The time's come
to set the rules.

Family fun? Turn it up a notch.



Playtime just got serious. The SEAT Alhambra's ready for the challenge. Step into the FR-Line, and the performance, versatility and design take it to another level. From school-runs to camping holidays, this is how you take practical and make it cool.



Sporty touches.

Every journey should be a memorable experience. And the FR-Line puts the fun into function. From the details on your steering wheel, to the style of the seats, it's not just about getting there. It's about how you feel when you arrive.



Wheel appeal.

The FR-Line's 18" Akira Atom Grey Alloy Wheels are built for action. The sports heritage brings powerful handling. Durability and strength bring reliability. Now all you've got to do is bring the adventure.

FR-Line.



Private space.

With the Atom Grey exterior mirrors, you'll see them outside. But your tinted windows stop them seeing inside.



Choose to cruise.

The multifunction steering wheel with in-built Cruise Control keeps everything you need, right where you need it.



Working as one.

Combine communication, navigation and entertainment, the Navi System brings it all together, effortlessly.



Badge of honour.

The front grille in glossy black finish is just another way you'll stand proud. Complete with FR logo, you're the boss.

Standard equipment.

Safety:

- Multifunctional Camera including: Blind Spot Detection, Lane Assist and Front Assist
- Seat belt reminder for 5 seats
- Driver and front passenger airbag, with knee airbag and airbag deactivation
- Cruise Control
- Driver Alert System
- ISOFIX/Top Tether in rear seats (for three rear child seats)
- Power-operated child safety lock

Electronics:

- Front and rear parking sensors
- Speed-related variable steering assist (Servotronic)
- Navi System including Europe's cartography, Rear View Camera, Combi Colour instrument
- Multifunction Display board computer
- 8 speakers (passive)
- Power-adjustable lumbar support for left front seat
- 3-zone Climatronic
- 12V plugs in front central console (2 for 5 seats, 1 for 7 seats) and in boot
- 2 USB charging ports in 2nd row
- Heat-protected side and rear windows
- Kessy without Safe function
- Tailgate/boot lid unlocking from outside
- Electric parking brake with Auto Hold function
- Tyre pressure warning indicator

Exterior:

- Tinted windows
- 18" Alloy Wheels
- Foldable exterior mirrors with parking position
- Exterior mirrors in Atom Grey
- Side stickers
- Windscreen wiper intermittent control with rain sensor
- Fog lights with cornering function
- Halogen twin headlights
- LED tail lights
- FR-Line badge on front grille and rear

Interior:

- 3 spokes steering wheel in leather with multifunction capabilities (Triptronic)
- FR-Line logo on doorstep and key cover
- Black interior: black sport seats and leather gear knob and steering wheel with FR logo, all with red stitching
- Floor mats with red piping (Accessories)
- Drawers under front seats
- Folding table on front seat backrests
- Interior tailgate light
- Chrome Pack
- Storage compartments in roof console
- Storage compartments in doors (front: 1.5l bottle and map holder)
- Boot with additional storage compartments
- Sunshade
- Lockable, illuminated and refrigerable glovebox
- Illuminated sun visors with makeup mirror

They're worth it.

They only deserve the best. The SEAT Alhambra's new Xcellence trim takes a family car, and lays on the refinement. With the details just right, it's time to indulge a little bit more.



Top of the class.

The Bi-Xenon headlights keep the road ahead as clear as day, while the front grille in glossy black finish means you'll shine for all the right reasons.



Signs of excellence.

You've got the best. You made the right choice. The Xcellence details on the steering wheel pin and door panel lettering are there to prove it.



Xcellence trim.

Standard equipment.

Safety:

- Multifunctional Camera including: Blind Spot Detection, Lane Assist and Front Assist
- Seat belt reminder for 5 seats
- Driver and front passenger airbag, with knee airbag and airbag deactivation
- Cruise Control
- Driver Alert System
- ISOFIX/Top Tether in rear seats (for three rear child seats)
- Power-operated child safety lock

Electronics:

- Front and rear parking sensors
- Speed-related variable steering assist (Servotronic)
- Navi System including Europe's cartography, Rear View Camera, Combi Colour instrument
- Multifunction Display board computer
- 8 speakers (passive)
- 3-zone Climatronic
- 12V plugs in front central console (2 for 5 seats, 1 for 7 seats) and in boot
- 2 USB charging ports in 2nd row
- Heat-protected side and rear windows
- Kessy without Safe function
- Comfort turn signal (1 touch = 3 lightings)
- Tailgate/boot lid unlocking from outside
- Electric parking brake with Auto Hold function
- Tyre pressure warning indicator

Exterior:

- Tinted windows
- Bumpers and door handles in body colour
- Wheel bolts with anti-theft protection (unlockable)
- 17" Alloy Wheels
- Chrome Pack
- Foldable exterior mirror with parking position
- Body-coloured exterior mirrors with integrated LED indicators
- Windscreen wiper intermittent control with rain sensor
- Fog lights with cornering function
- Halogen twin headlights
- LED tail lights
- Separate daytime running light with automatic headlight control and Coming Home feature

Interior:

- 3 spokes steering wheel in leather with multifunctional capabilities (Triptronic)
- Leather gear knob handle
- Scuff plates in door apertures
- Xcellence logo on steering wheel
- Xcellence lettering on doorstep
- Drawers under front seats
- Folding table on front seat backrests
- Manual height adjustment for front seats, electric backrest adjustment for left front seat
- Three single seats (1st row of seats)
- Sport comfort seats in front
- Boot with additional storage compartments
- 4 hooks in boot
- Lockable, illuminated and refrigerable glovebox
- Sunshade
- Illuminated sun visors with makeup mirror



Fancy footwork.

A wave of your foot is all it takes to open the boot. If you're carrying the family's gear, easy access is just a swipe away.



The right light.

The LED interior lighting system ensures you always have the correct amount of illumination for any situation.



Power to the people.

Everyone has at least one device. With dual-USB ports built in, the whole family can power up on the go.



Step up to the plate.

With the Xcellence doorstep, every time you get inside and every time you leave, you'll be reminded that you chose the best.

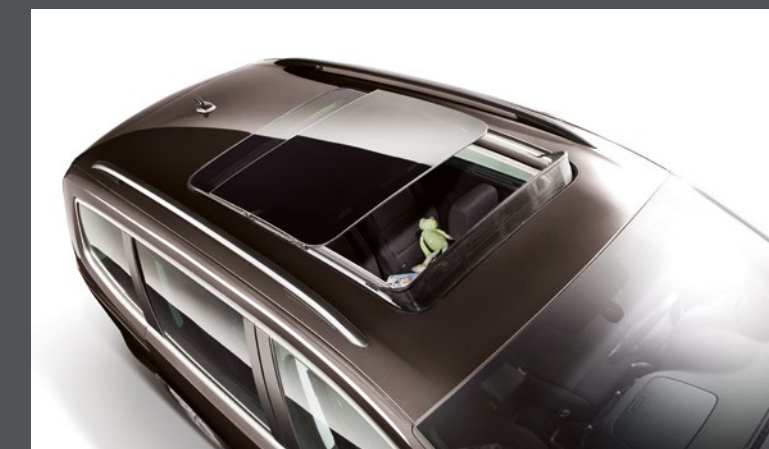
Every moment is special.

The perfect blend of form and function, the Style trim in the SEAT Alhambra is tailored to family life. Whatever the situation, whenever the mood strikes, you've got the style and security to get you there.



The closest bonds.

Full Link. It's your way of always staying in touch. Connect any compatible smartphone, and bring its functionality to your SEAT Alhambra.



Sky's the limit.

The panoramic sunroof brings the outside inside, at the push of a button. Warm summer days in the countryside, here we come.

Style trim.



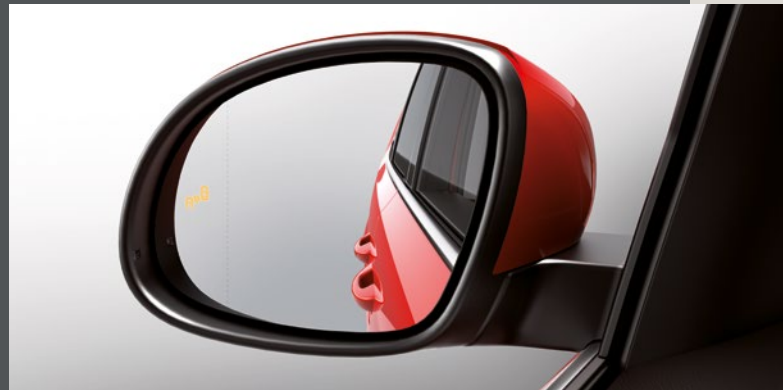
Time to relax.

At the end of a long day, what better way to unwind than with your own personal massage seat in the front? It's your moment to take it easy.



Stay vigilant.

Sometimes, family life can be exhausting. The Tiredness Recognition System ensures you stay alert if you start to feel tired.



See them coming.

The Blind Spot Detection system works using an LED in your rear view mirror, so you're aware of any invisible objects.



Tailored temperature.

3-zone Climatronic control, adaptable to the first and second row of seats, so everyone can have things just right.

Standard equipment.

Safety:

- Multifunctional Camera including: Blind Spot Detection, Lane Assist and Front Assist
- Seat belt reminder for 5 seats
- Breakaway rear view mirror with auto-dimming
- Driver and front passenger airbag, with knee airbag and airbag deactivation
- Cruise Control
- Driver Alert System
- ISOFIX/Top Tether in rear seats (for three rear child seats)
- Power-operated child safety lock

Electronics:

- Front and rear parking sensors
- Speed-related variable steering assist (Servotronic)
- Navi System including Europe's cartography, Rear View Camera, Combi Colour instrument
- Multifunction Display board computer
- 8 speakers (passive)
- 3-zone Climatronic
- 12V plugs in front central console (2 for 5 seats, 1 for 7 seats) and in boot
- 2 USB charging ports in 2nd row
- Heat-protected side and rear windows
- Central locking with radio remote control, interior controls, without Safe function
- Tailgate/boot lid unlocking from outside
- Electric parking brake with Auto Hold function
- Tyre pressure warning indicator

Exterior:

- Wheel bolts with anti-theft protection (unlockable)
- 16" Alloy Wheels
- Foldable exterior mirrors with parking position
- Body-coloured exterior mirrors with integrated LED indicators
- Windscreen wiper intermittent control with rain sensor
- Fog lights with cornering function
- Halogen twin headlights
- LED tail lights
- Separate daytime running light with automatic headlight control and Coming Home feature

Interior:

- Height and reach adjustable steering wheel
- 3 spokes steering wheel in leather with multifunctional capabilities (Triptronic)
- Leather gear knob handle
- Backrest release for right front seat
- Drawers under front seats
- Folding table on front seat backrests
- Manual height adjustment for front seats, electric backrest adjustment for left front seat
- Cup holders
- Boot with additional storage compartments
- Adjustable and removable boot cover
- 4 hooks in boot
- Lockable, illuminated and refrigerable glovebox
- Illuminated sun visors with makeup mirror

Wheels.

16"



DESIGN 48/1
ALLOY WHEELS
St

17"



DYNAMIC 48/1
ALLOY WHEELS
St



DYNAMIC 48/2
ALLOY WHEELS
Xc

18"



PERFORMANCE
ALLOY WHEELS
Xc



AKIRA
ALLOY WHEELS
St Xc



AKIRA ATOM GREY
ALLOY WHEELS
FR

Style **St**
Xcellence **Xc**
FR-Line **FR**
Serial **■**
Optional **■**



Colours.

Style **St**
Xcellence **XC**
FR-Line **FR**
Serial **■**
Optional **■**

¹Soft colour.
²Metallic colour.
³Exterior mirrors in Atom Grey for FR-Line.



PURE WHITE¹ **St XC FR³**



WHITE SILVER² **St XC FR³**



INDIUM GREY² **St XC FR³**



DEEP BLACK² **St XC FR³**



BLACK OAK BROWN² **St XC FR³**



MOONSTONE SILVER² **St XC FR³**



URANO GREY¹ **St XC FR³**



ATLANTIC BLUE² **St XC FR³**



REFLEX SILVER² **St XC FR³**

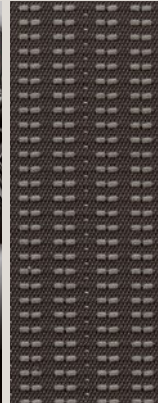


ROMANCE RED² **St XC FR³**

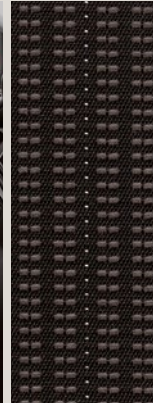


Our global range of cars and product specifications varies from country to country. Please, visit your local SEAT website to know more about the product offer available for you.

Upholstery.



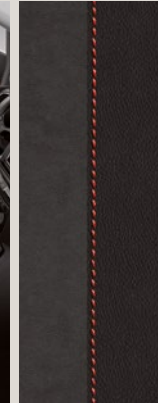
CLOTH DARK GREY AND GREY COMFORT SEATS XC St



CLOTH BLACK AND GREY COMFORT SEATS DM St



CLOTH GREY MIKELLY EF XC



ALCANTARA® BLACK SPORT SEATS FR-LINE FL + PFR FR



LEATHER BLACK AND COGNAC SPORT SEATS XY + WL1 St XC



LEATHER BLACK SPORT SEATS JJ + WL1 St XC



ALCANTARA® BLACK SPORT SEATS JJ + PLT St XC

Style St
 Xcellence XC
 FR-Line FR
 Serial
 Optional





Versatility
starts here.

Sometimes, the little extras go a long way. With those covered, you can focus on quality time. Weekend cycles. Trips to the beach. Family adventures. Whatever keeps you busy, tailor your SEAT Alhambra to be exactly how you want it.

Transport.

Need some help with the heavy lifting? Families come with a lot of stuff, so this range of tailormade accessories makes it easy to take it with you. Whether it's a road trip or the latest hobby, there's a solution to get you there.

Ski rack.

Straightforward skiing. The sturdy aluminium ski rack complete with anti-theft system is easy to mount and use.

Ski rack Xtender.

The extendable ski & snowboard rack lets you carry up to 5 pairs of skis or 2 snowboards at once. Load them all up quickly and easily to enjoy more time out on the piste.



Transport.



Tow bar.

If you have a trailer, the tow bar makes fitting and removing it simple and safe. Your capacity just got a boost.



Hatchback bike rack.

If you love cycling, the hatchback bike rack is a must. Able to safely transport up to 3 bikes, it comes pre-assembled for easy installation. Carrying up to 60kg, with an integrated anti-theft system, all you need to do now is hit the trails.



450l roof box.

Get box clever. Carrying almost anything you'll need, the double-plastic walls are durable, protecting your stuff in harsh weather conditions, and the aerodynamic shape improves handling. Easy to attach and use and fully compatible with roof bars, it's ready for any adventure.



Surf rack.

Used with the roof bars and storing up to 2 surfboards, the surf rack's ultra-adaptable supports keep it easy to use.



Load stop rack.

One day you might need one thing. The next day, another. The load stop rack doesn't mind. You decide, and it's good to go.

Exterior.

Every detail adds up to something unique. And for something that you use every day, you'll want it to be just right. These decorative elements for your SEAT Alhambra's exterior combine effortless cool with functional design, taking your look to another level.

Chrome exterior mirror covers.

A splash of chrome on your exterior mirrors adds an extra dimension of luxury. Timeless design that you'll enjoy again and again. You'll see them, and they'll be looking.

Hatch door moulding.

Cool and refined, the hatch door moulding in chrome gives your tailgate a real touch of flair.



Interior.

Make each ride more comfortable with a range of clever upgrades to the interior of your SEAT Alhambra. For those long journeys, or just a quick trip to the shops, they're the practical details that you'll find indispensable.



Espresso machine.

A better kind of daily grind. When you're on the road, there's nothing quite like a handmade cup of coffee. The auto-set espresso maker, complete with 12V adaptor, ensures you'll always have the perfect cream in any situation.



Cup holder.

This multifunctional storage device is innovatively shaped to fit a lot into a small space. From keys and stationery, to all of life's necessities, clear up the clutter and have everything to hand.



Inox side sills.

Easy to set in place, the custom, laser-etched Inox side sills carry your Alhambra's name. Stylish and protective, they also make getting in and out of the front seats more practical.



Sun shades.

Whether it's a sunny day, or you're driving at night, these shades help you to maintain visibility on the road, and regulate the temperature inside the car. When it comes to staying safe and cool, it's one of the simplest things you can do to your SEAT Alhambra.

Protection.

Family life can get messy. Keeping your SEAT Alhambra in great condition is the best way to keep enjoying it to the fullest, while maintaining its value. This range of simple solutions are there for when you need some extra protection.

Anti-slip boot tray.

Tailormade, the anti-slip boot tray is designed to protect against dampness and dirt, while preventing objects from sliding around in the back. Light, flexible and durable, you can simply roll it up when you're not using it.

Front and rear mudflaps.

Prevention is always better than cure. These front and back mudflaps protect the floor, bumper, sides, doors and rear of your SEAT Alhambra. Dirt? No problem. Gravel? Not today. And water getting where it shouldn't? A thing of the past.





Safety.

Keeping everyone comfortable and safe is really all there is to it. How you do it is up to you. The SEAT Alhambra comes with a range of options to protect what's important, and make every journey that little bit better. From custom seats to infotainment devices, even the longest journeys will fly by.

Separation grille.

Divide your boot into sections to keep whatever you want to take with you safe and secure. Attaching easily to the rear seats, it's just another way you'll keep your passengers and your SEAT Alhambra happy and protected.

SEAT PEKE G1 Trifix I-Size.

With safe and simple installation, this child seat with integrated ISOFIX connectors complies with the new i-Size regulations and is designed to fit children between 76 cm and 105 cm in height.

Life's too short to sweat the small stuff. The experts in our SEAT Service team use only SEAT Genuine Parts to keep your SEAT Alhambra at its best – and you at your boldest.

Bolder living
starts here.



Life's for living.

With SEAT CARE, you benefit from a package of SEAT After Sales services at a fixed and competitive monthly rate. Value for money, with the service you expect. Starting from XX€ / month, you can save up to 50% compared to standard costs. No worries. For more fun.

Go the extra mile. We've got your back.



The SEAT Warranty Extension lets you extend your 2-year manufacturer's warranty for 1, 2 or 3 years, or up to 100,000 km — whatever comes first. And if your car is new, the warranty comes included. Easy. Cost-effective. Ready for bolder living.

Whatever you need. Just ask.



Want a tow? More fuel? On-the-spot repair? SEAT Mobility Service is here for you. 24/7. Everywhere in the EU, plus most neighbouring countries. For up to 10 years. This is complete, reliable roadside assistance. And best of all? If your SEAT is new, you get 2 years free.

Play harder. We'll keep you on track.



SEAT Insurance is tailor-made to your car. To make moving forward easy. Our 24-hour customer service and official workshops using only SEAT Genuine Parts get you back on the road. Vandalism or theft? No problem. We're your ride.

Challenge ahead. Worries behind.



Live life to the fullest. SEAT Service & Maintenance contracts cover most services in the SEAT Service Programme for the first 3, 4 or 5 years of ownership. Available in Basic or Premium, with options for financing. So you can put your positivity into what really matters.





SEAT is committed to a policy of continuous product development and reserves the right to make changes to specifications, colours and prices without notice. The information in this brochure can therefore be given as guidance only. While SEAT makes every effort to ensure that specifications are accurate at the time of publication, you should always check with your authorised SEAT Partner for the latest information. Due to limitations of the printing process the colours reproduced in this brochure may vary slightly from the actual paint colour and material. This vehicle and all its parts, as well as the original spares, were designed according to the Legal Regulations governing the prevention and minimisation of Environmental Impact, through the use of recycled/ recyclable materials, with measures taken to achieve suitable recycling for the conservation and improvement of environmental quality.

12/2020. Printed in Spain.

