



**SEAT Ibiza.**



# Feel the beat.



Give your next adventure the soundtrack it deserves. The SEAT Ibiza with BeatsAudio™ sound system brings you an audio system like no other, so your music sounds as balanced and crisp as it's supposed to be. Jump in, turn up the volume, and sing like nobody's watching on your way to fun and unforgettable memories.



# 01 SEAT.

06 Where to next?  
08 Moving made easy

# 02 Your Ibiza.

12 Exterior design  
16 Interior design  
18 Technology  
22 Connectivity  
22 Safety

# 03 Your way.

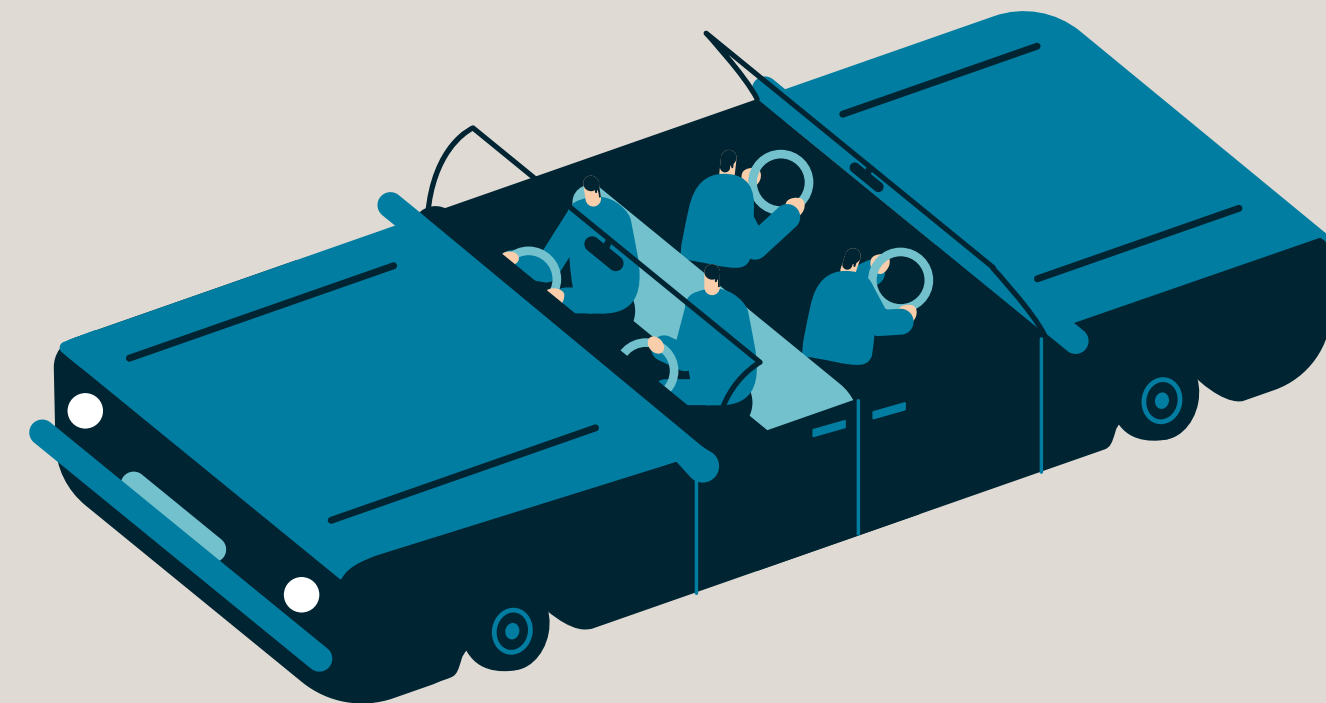
28 Beats  
32 FR  
36 Xcellence  
40 Style  
44 Reference  
46 Wheels  
48 Colours  
50 Upholsteries

# 04 Your accessories.

54 Performance  
58 Interior  
60 Interior customisation  
64 Exterior customisation  
68 Transport  
72 Protection  
74 Infotainment & Safety

# 05 At your service.

80 Environmental information







# Where to next?

The world doesn't stand still. And neither do you. Every challenge is an opportunity to try something new. Be curious. Keep pushing forward.

It's the way we live too. SEAT is a brand born in Barcelona. Inspired by colour and light. Fuelled by creative energy and optimism. We're here to make it easier for you to move the way you want to. So, where shall we go?



Our global range of cars and product specifications varies from country to country. Please, visit your local SEAT website to know more about the product offer available for you.



# Moving made easy.

At SEAT we believe that moving should be effortless. For everyone.

Cars that you want to drive because they look great and feel even better. Large SUVs. eHybrids. Electric scooters and bikes. Mobility solutions to make moving through your city smarter. Brighter. More enjoyable. And above all, easier.



Our global range of cars and product specifications varies from country to country. Please, visit your local SEAT website to know more about the product offer available for you.



# Your Ibiza.



## On your marks. Get set. Move.

Why stay the same? The SEAT Ibiza comes with more technology, more space and more ways to make it your own. Everything is sharper. Smarter. Made to take on the city like never before.





Exterior design

# Life's too short to stand still.

Brighter than the rest. The SEAT Ibiza is equipped with the latest full LED headlights and rear LED pilots. So you've got the power, and the vision, to go the distance.



Our global range of cars and product specifications varies from country to country. Please, visit your local SEAT website to know more about the product offer available for you.





## Exterior design

# Let's roll.

Agility comes in the form of tailor-made rims, now available in 18" across the FR trim. Alloy brings lightness and strength, in your choice of design. And because they're galvanised, they'll stay fresh. Good to go?







Interior design

# Want change? Experiment.

Things are different now. An updated dashboard with a digital 8" glass display and ambient lighting offers new levels of customisation and technology. So go on, break the mould.



Our global range of cars and product specifications varies from country to country. Please, visit your local SEAT website to know more about the product offer available for you.





## Technology

# Why wait for tomorrow?

It's al right here, right now. Easily stay in command with HolaHola, SEAT's new intelligent assistant. The Connectivity Box with Wireless Charger and GSM Amplifier keep you powered up and in range. And with the Keyless System and Heartbeat button, you can get in and get going in a heartbeat.







## Technology

# It's all yours to enjoy.

A comprehensive view of the world around you. From the Rear View Camera that let's you see what's coming up behind, to a more connected car, the ever so efficient Alexa and the SEAT Drive Profile. All you need to ensure a smooth and safe ride is at your fingertips.







## Connectivity

# Your Ibiza. Always connected.

Get the most out of every journey with SEAT CONNECT. Stay on track and in the know with the infotainment system and connect remotely via your smartphone through the SEAT CONNECT App.

### Your car. Always within reach.

For a life lived on the move. The Remote access services allow you to manage your vehicle from wherever you are.

- Forgot where you parked? Use the SEAT CONNECT App to activate the horn and lights, so you can easily spot your car in a crowd.
- Not sure if you left the lights on? Check up on lighting, doors and windows status from wherever you are.
- Lent your Ibiza to someone else? Make sure it's staying inside the speed limit and the established area.



### Focus on what matters.

The latest safety technology from SEAT is designed to save precious time in the event of an emergency. For total peace of mind.

- Stay safe, stay connected. Private emergency call automatically connects with the emergency services if it detects an accident.
- Any questions? Press the Customer Care button to put you in touch with SEAT Service.
- Assistance required? Push the Breakdown Call button to contact our call centre to ask for help.

### Life is better with music.

Whatever your mood, the SEAT Ibiza has the music to match. And the advanced technology calculates the shortest route according to real-time traffic situations.

- Stay ahead of the traffic with constantly updated maps and store your routes for the next time.
- Find the nearest petrol stations and available car parks, their opening hours and prices. You can also save any of them as a point of interest.
- Connect easily to AppleMusic™, TIDAL™ and internet radio for over 60 Million ad-free songs at your fingertips.

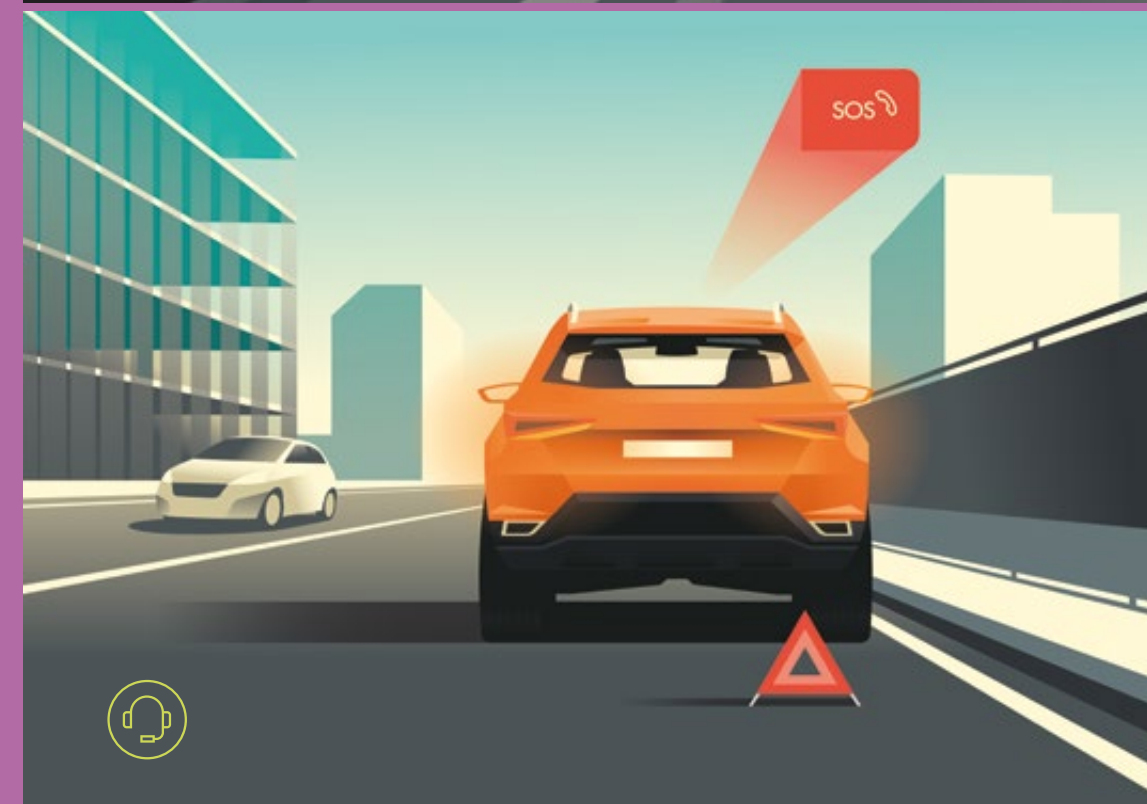




## Safety

# Just sit back and take it all in.

Ease at every stretch of the journey. You can relax knowing you've got the tools to get you through the toughest of situations. Everyday traffic or long road trips are a breeze with Front Assist. Hill Hold Control makes sure you keep moving, no matter what. Plus you can count on eCall whenever or wherever you may be.



### 01. Hill Hold Control.

No more uphill battles. This feature maintains the brake pressure after its release and gives you a few seconds to get yourself moving on an incline.

### 02. Front Assist.

Maintain a safe distance from the car ahead of you and reduce stopping time if needed. It also warns you of any obstacles up ahead that it may detect.

### 03. eCall.

Emergency services will automatically be informed of your location in case of a serious accident or you can press a button on the ceiling to make the call yourself.



# Your way.



## Who wants to follow the herd?

It's easy to be yourself with the SEAT Ibiza.  
Choose the trim. Choose the colour. Choose  
the wheels and upholstery. You're in charge.  
[Feels good, doesn't it?].





**See the world**

**through  
your ears.**



# SEAT Ibiza Beats.

Is music your world? Press play on your premium BeatsAudio™ Sound System featuring 6 speakers and 1 powerful subwoofer. With vibrant colours for a top quality sound you can see. The SEAT Ibiza Beats. Built for the best sound.



01



03



05



02



04



06

## 01 Your music. Front and centre.

Keep an eye on your favourite tunes with the colour display at the centre of your SEAT Ibiza Beats’ SEAT Digital Cockpit.

## 02 Made for music heads.

Car and music become one when you add stereo-themed decorative adhesives to your pedals. Just push play and go.

## 03 Top it off.

The sophisticated black greenhouse interior cover completes the SEAT Ibiza Beats’ exclusive style.

## 04 Looks matter too.

See the music in the world around you with orange colour-pop stitching on the front seat upholstery and steering wheel.

## 05 Your favourite track.

Drive to your own beat with 16" Urban Machined Black R Alloy Wheels.

## 06 The concert comes to you.

6 powerful speakers and one 10-litre subwoofer. All perfectly engineered for a crisp, clear and balanced sound. Meet BeatsAudio™.



# FR.



## Are you playing, or spectating?

Dynamic down to the last detail. The FR trim is smart, sporty and stylish. Set your own pace with a SEAT Ibiza that's made for life in the fast lane.

### A better view.

Open up and let the light in. The Ibiza's electric roof gives you a new perspective of the road ahead.

### Spare room.

One for the road? Flip down the back seats and turn your Ibiza's boot into a space that's big enough to carry everything you need.





**Standard Equipment**

**Safety**

- Tiredness Recognition System
- Hill Hold Control
- Cruise Control System (CCS)
- Front fog lights with cornering function
- Twin halogen headlights with LED daytime running lights
- Rear fog lights
- LED tail lights
- Separate daytime running lights with automatic headlamp activation and Coming Home feature
- Electronic Stability Control (ESC)
- Seat belt reminder
- Three-point seat belts
- Driver and front passenger airbag with deactivation for passenger
- Side airbag in front, with curtain airbag
- Three rear head restraints
- Rear drum brakes

**Exterior**

- FR sport bumpers
- Chromed front grille frame
- Dynamic 17" Alloy Wheels
- Painted mirror cases, window frames and door handles in Brilliant Black
- Front fog lights frame with decorative inserts
- Rear spoiler FR with double exhaust pipe

**Electronics**

- Onboard Computer Plus
- SEAT Drive Profile
- Power-folding, power-adjustable and heated exterior mirrors
- Climatronic with Air-care filter
- Fresh air intake system with combination filter
- 6 speakers

- Antenna for AM/FM reception
- Bluetooth®
- USB type C socket
- Radio with 6.5" MIB colour screen
- Interior ambient lighting
- Power windows with comfort operation and circuit breaker
- Windshield wiper with intermittent control and light and rain sensor
- Rear window wiper and washer system with intermittent control
- Auto-dimming breakaway interior rear view mirror
- 2 foldable keys with remote control function

**Interior**

- Chromed instrument panel
- Leather multifunctional steering wheel
- Leather gear knob with decorative inserts
- Leather hand brake
- Leather door and side trim panel
- Black greenhouse
- FR Sport seats
- Height-adjustable front seats
- ISOFIX + Top tether anchors in side rear seats
- Split and folding rear seats
- Sun visors with mirror and card holder in driver seat



**01 Big, bright, brilliant.**

The 8" digital glass display on your new SEAT Ibiza is command and control.

**02 Style on the side.**

See the world in high definition with your Glossy Black Exterior Mirrors.



**03 Keep on rolling.**

Performance 18" Alloy Wheels. Lightweight and robust. Four new reasons to get excited.

**04 It's a wireless world.**

Stay juiced up all day, every day with your Connectivity Box.



**05 Luxury living.**

Dinamica® upholstery with colourful contrast red stitching and FR steering wheel detail keep things sporty inside.

**06 Front Assist.**

Maintains a safe distance from cars ahead and avoid obstacles by monitoring what's ahead of you.



# Xcellence.



## Don't do ordinary?

Live extraordinary with the Xcellence trim. It's the SEAT Ibiza guaranteed to turn heads in the city.

### Big on the inside.

There's no need to travel light when you can comfortably carry two large suitcases thanks to the Ibiza's 355l of boot space.

### Hello future.

No longer something you only see in movies. The SEAT Digital Cockpit displays everything you need while driving. From speed and maps to music and more. The future has finally arrived.





**Standard Equipment**

**Safety**

- Tiredness Recognition System
- Rear Park Assist
- Hill Hold Control
- Cruise Control System (CCS)
- Front fog lights with cornering function
- Twin halogen headlights with LED daytime running lights
- Rear fog lights
- LED tail lights
- Separate daytime running lights with automatic headlamp activation and Coming Home feature
- Electronic Stability Control (ESC)
- Seat belt reminder
- Three-point seat belts
- Driver and front passenger airbag with deactivation for passenger
- Side airbag in front, with curtain airbag
- Three rear head restraints
- Rear drum brakes

**Exterior**

- Chromed front grille frame with hot stamping
- Chromed window frames
- Painted mirror cases and door handles in Atom Grey
- Enjoy 15" Alloy Wheels
- Front fog lights frame with decorative inserts

**Electronics**

- Onboard Computer Plus
- Power-folding, power-adjustable and heated exterior mirrors
- Climatronic with Air-care filter
- Fresh air intake system with combination filter

- 6 speakers
- Antenna for AM/FM reception
- Bluetooth®
- USB type C socket
- Radio with 6.5" MIB colour screen
- Interior ambient lighting
- Power windows with comfort operation and circuit breaker
- Windshield wiper with intermittent control and light and rain sensor
- Rear window wiper and washer system with intermittent control
- Auto-dimming breakaway interior rear view mirror
- Central locking system "Keyless Entry"
- 2 foldable keys with remote control function

**Interior**

- Aluminium doorstep with "Xcellence" engraving
- Chromed instrument panel
- Leather multifunctional steering wheel
- Leather gear knob with decorative inserts
- Leather hand brake
- Textile and decorative door and side trim panel
- Black greenhouse
- Xcellence comfort seats
- Height-adjustable front seats
- Chrome Pack High
- ISOFIX + Top tether anchors in side rear seats
- Split and folding rear seats
- Storage Pack: front centre armrest and document holder under left front seat
- Luggage pockets on front seats backrest
- Sun visors with mirror and card holder in driver seat



**01 Need a break?**

Tiredness Recognition System lets you know when it's time to find a rest stop.

**02 Ultimate alloys.**

17" Alloy Wheels will turn heads with the highest level of trim.



**03 Looking sharp.**

Full LED headlights are as bright as they are efficient. This is how to lead the way.

**04 Big beats.**

The BeatsAudio™ Sound System is everything you need to soundtrack your mission.



**05 Style stands out.**

Elevate your look with sophisticated white moulding on the door, steering wheel and dashboard.

**06 Cool view.**

You'll see them coming with Atom Grey Mirrors. And they'll be looking.



# Style.



## Seize the day, in style.

The Style trim combines some of the best features of the SEAT Ibiza with a fit and finish that's yours to choose. Now you're really owning it.

### **Visionary design.**

The halogen headlamps show the way forward and give your Ibiza Style a sharp and distinctive appearance.

### **Fashionable finish.**

Looking good, feeling better. Style comes as standard with these exclusive seats.





**Standard Equipment**

**Safety**

- Hill Hold Control
- Separate daytime running lights (DRLs)
- Twin halogen headlights with halogen daytime running lights
- Rear fog lights
- Halogen tail lights
- Electronic Stability Control (ESC)
- Seat belt reminder
- Three-point seat belts in front
- Driver and front passenger airbag with deactivation for passenger
- Side airbag in front, with curtain airbag
- Three rear head restraints
- Rear drum brakes

**Exterior**

- Body-coloured bumpers
- Chromed front grille frame
- Body-coloured mirror cases and door handles
- Urban 15" Steel Wheels

**Electronics**

- Onboard Computer Plus
- Electrically adjustable exterior mirrors
- Dust and pollen filter
- Manually controlled air conditioning
- 6 speakers
- Antenna for AM/FM reception
- Bluetooth®
- USB type C socket
- Radio with 6.5" MIB colour screen
- Front power windows
- Windshield wiper with intermittent control and potentiometer
- Rear window wiper and washer system with intermittent control
- Dimming interior rear view mirror

- Indirect tyre pressure monitoring system
- Power-locking with remote control
- 2 foldable keys with remote control function

**Interior**

- Leather gear knob
- Leather hand brake
- Door panels in PVC
- Grey greenhouse
- Style comfort seats
- Height-adjustable driver seat
- Chrome Pack High
- ISOFIX + Top tether anchors in side rear seats
- Split and folding rear seats
- Sun visors with mirror and card holder in driver seat



**01 Pure class.**

Chrome detailing on the inside brings out the bling.

**02 The big wheel.**

It's about you from the ground up with 16" Alloy Wheels.



**03 Easy does it.**

At the flick of a switch, your cruise control is motorway ready.

**04 Looking ahead.**

All your information in one glance. So you can focus on moving.



**05 Full attention.**

Super-bright rear LED brake lights attract attention for the right reasons.

**06 Don't sweat.**

Built in Climatronic Bi-Zone and Air Care always keeps you cool under pressure.



# Reference.



## Ibiza, pure and simple.

The Reference trim has everything you need and nothing you don't. Time to own the road, Ibiza style.

### Switched on.

Feeling connected and entertained? With the 6,5" MIB, everything becomes a breeze.

### Run the road.

Your responsive steering wheel brings sporty moves to a city car. This is the SEAT Ibiza standard.





# Wheels.

15"



Urban R St



Enjoy R St XE

16"



Design St



Design Machined XE



Urban Black R Machined  
St XE Bt

18"



Performance FR



Machined Black St XE FR



Sport Black St XE FR

17"



Dynamic Machined XE



Dynamic FR



Machined Cosmo Grey St XE



Machined Black St XE

- Reference R
- Style St
- Xcellence XE
- FR FR
- Beats Bt
- Standard
- Optional



# Colours.



Midnight Black<sup>2,3</sup> St XE FR Bt



Mystery Blue<sup>2,3</sup> St XE FR



Pure Red<sup>1,3</sup> R St XE FR



Desire Red<sup>2,3</sup> St XE FR



Magnetic Tech<sup>2,3</sup> St XE FR Bt



Urban Silver<sup>2,3</sup> St XE FR Bt



Nevada White<sup>2,3</sup> St XE FR Bt



Candy White<sup>1,3</sup> R St XE FR

Reference R  
Style St  
Xcellence XE  
FR FR  
Beats Bt  
Optional

<sup>1</sup>Soft colour.  
<sup>2</sup>Metallic colour.

<sup>3</sup>Exterior mirrors in Black for Reference, in Atom Grey for Xcellence and in Brilliant Black for FR trim.





# Upholsteries.



Cloth Black Comfort seats AF R



Cloth Black & Grey Comfort seats CB St



Cloth Edge Comfort seats CD XE



Dinamica® Black Sport seats FL + PL7 FR



Cloth Edge Comfort seats with Leather PAD CD + PIF XE



Dinamica® Black Sport seats CD + PIF + PL7 XE



Cloth Black Sport seats FL FR



Dinamica® Beats Sport seats 52S Bt

- Reference R
- Style St
- Xcellence XE
- FR FR
- Beats Bt
- Standard
- Optional

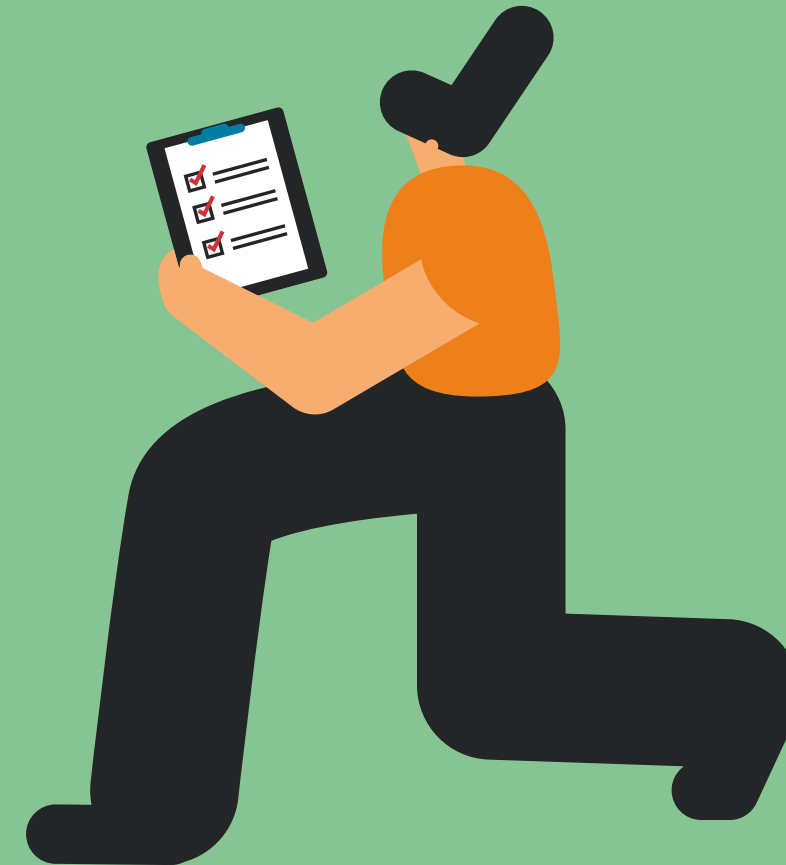




# Your accessories.

**Ready for anything.  
Any time, anywhere.**

Want to be faster? Better protected? Take more with you? Go for it. SEAT Ibiza Accessories are the best way to get the most out of every ride. Tailor-made for whatever you have planned.







# Performance.

Track car looks. City car spirit. Your new SEAT Ibiza comes with the option of sporty extras that improve its performance, and lift its character with bright colour accents and moulded enhancements.

## Front Styling Kit.

Style up your front end with a dynamic bumper lip, that complements your car's main colour with a contrasting one of your choice.

## Side skirts.

Look great from every angle and feel the improved aerodynamics with skirts that fit perfectly to the side of your new SEAT Ibiza.

## 18" Alloy Wheels.

Want to upgrade? These stylish rims are the best in show. Mystery Blue and Desire Red hub cap colour options round off pure performance.

SEAT Sport Line: All accessories wheels fitted at SEAT Sport. Order through Car Configurator and receive them already mounted on your new car.



Our global range of cars and product specifications varies from country to country. Please, visit your local SEAT website to know more about the product offer available for you.





# Performance.

If you're going to get there, get there with some sporty attitude, right? These accessories are designed to boost performance, and look like you've just come from the track.

## Spoiler.

Nothing says sporty like a spoiler. Enjoy enhanced aerodynamic performance and downforce while looking like you just came from the track.

## Rear diffuser.

You'll always make a stylish exit with this aerodynamic rear bumper, featuring an aluminium decorative that sits below your number plate.

## Hatchback moulding.

Available in chrome or black. Look great with a smart hatch door moulding that fits perfectly to the rear of your car.

SEAT Sport Line: All Performance accessories fitted at SEAT Sport. Order through Car Configurator and receive them already mounted on your new car.



**Our global range of cars and product specifications varies from country to country. Please, visit your local SEAT website to know more about the product offer available for you.**





# Interior.

Easy life mobility made even easier.  
This practical and polished range  
is made for every journey.

## Net between seats.

Handy, stylish and protective, this  
seat net is next-level practicality.



## 01 Nextbase 101 Elite.

If you need to brake suddenly  
automatically record everything  
for extra security, inside and out.



## 02 Spherical cup holder.

Smart and simple. Keep your  
essentials close to hand.



## 03 Universal magnet mount.

Designed to place your phone  
at the best height for driving.  
This is a modern-day must-have.



## 04 Illuminated side sills.

Light up your life with these  
decorative side sills. They illuminate  
when you open your doors, with no  
electrical installation.





# Interior customisation.

The SEAT Ibiza now comes with three dramatic, spacious interiors: Sport, Urban Tech and Trend. Updated footrests, pedals, floor mats, gear knob and steering wheel keep things as fresh inside as they are outside.



## Sport.

Race ahead with these sporty accessories in Desire Red.





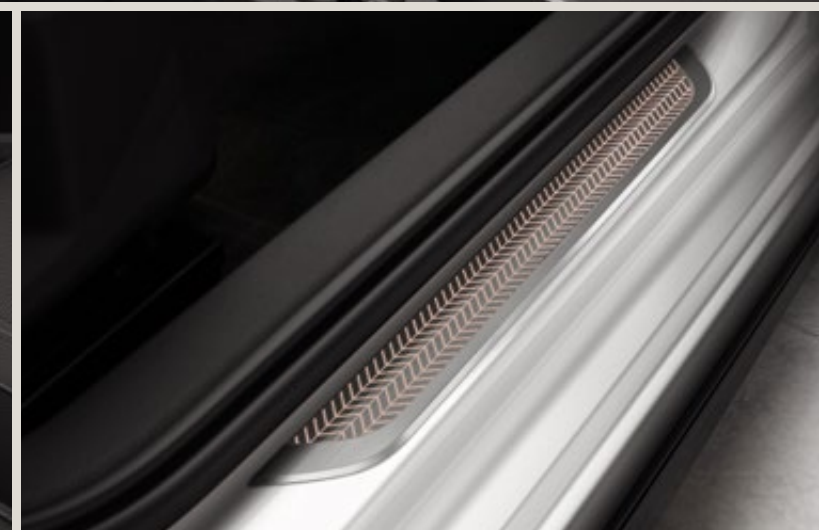
### Urban Tech.

For city slickers, these elegant accessories in Mystery Blue show you mean business.



### Trend.

Coolness comes first. Choose these Mystic Magenta accessories to add some trendy touches to your Ibiza.



Our global range of cars and product specifications varies from country to country. Please, visit your local SEAT website to know more about the product offer available for you.





# Exterior customisation.

Make it yours with these accessories, designed to enhance your new Ibiza's look and feel. The sporty roof stickers come in three options to keep you looking fresh.

## Exterior mirrors.

You can change the colour of your exterior mirrors to Piano Black, Desire Red, Mystic Magenta and Mystery Blue. Looking fresh from all angles.



## Trend exterior sticker.

Keep it on trend, with this cool sticker that matches your interior design.



## Sport exterior sticker.

Designed to complement your interior, this unique design not only looks fly but keeps your roof in great condition. Your sporty Ibiza just got sportier.



## Urban Tech exterior sticker.

A great addition if you're rocking the Urban Tech interior. Refined lines, inspired by the digital age. Expressive and protective in one.





**More?**

**It's all yours.**



# Transport.

For all the excitement that life brings,  
have what you need when you need it.

## **Tow bar bicycle rack.**

A foldable metal rack attaching  
to your Ibiza's tow bar, it can  
carry two bicycles. This is  
mobility for your mobility.



Our global range of cars and product specifications varies from country to country.  
Please, visit your local SEAT website to know more about the product offer available for you.

## **Ski rack.**

Trip to the slopes? This ski rack is  
especially designed, and perfect  
for family use. Holds 4-6 skis or 2-4  
snowboards.



## **Surf rack.**

Never miss a break with this handy  
surf rack. Adapts to the shape of  
your surfboard, and can carry two  
of them. For coast to coast action.



## **Roof box.**

Protect your luggage from the  
weather, with this stylish and  
aerodynamic roof box. Simple to  
assemble and anchor, it opens on  
both sides and is used together with  
roof bars. Ideal for longer family trips.







# Transport.

## **Tow bar.**

Low profile and strong. When you need to take it with you, this handy tow bar is ready for action.

## **Tow bar ski rack.**

Live for the piste? This tow bar is designed to carry up to 6 pairs of skis or 2 snowboards.







# Protection.

There are years of fun ahead, so protect your new SEAT Ibiza with a range of custom accessories. Designed for whatever the road holds, you'll keep everything in its place, and in the best condition.

## Snow chains.

Be prepared when winter comes. These snow chains are easy to transport and attach, improving your new Ibiza's grip.



## Boot organiser and separation grille.

Perfect for pets, everything fits neatly to the floor panel. The boot organiser comes complete with telescopic bars. Only available for luggage compartment with double level.



## Rubber floor mats and mudflaps.

Simple and effective. These rubber floor mats are a great way to protect the inside of your new Ibiza. Front and rear mudguards do the same for the outside.



## Reversible boot mat and foam boot tray.

Handles whatever you throw at it. Carry wet and dirty objects easily, and protect your luggage compartment. The foam protector fits in the same way, and both are only available for single level compartments.





# Infotainment & Safety.

The SEAT Ibiza comes with custom seats and safety features to take care of everyone, plus the latest onboard infotainment devices.

## **Navlet 7".**

Head-up display equipped HD Europe TeleAtlas maps. LiPo battery and quad-core processor keep you in the loop while a 5MP front camera and 2.3MP rear camera keep track. Headrest bracket and suction cup available for passenger and driver use.

## **SEAT PEKE G1 Trifix I-Size.**

Suitable for mass groups II, III (15 kg -36 kg). Installed either with the car seat belt or ISOFIX plus car seat belt. Height adjustable backrest. The cover is removable and washable.



Our global range of cars and product specifications varies from country to country. Please, visit your local SEAT website to know more about the product offer available for you.



# At your service.

## Bolder living starts here.

Life's too short to sweat the small stuff.  
The experts in our SEAT Service team use  
only SEAT Genuine Parts to keep your SEAT  
Ibiza at its best – and you at your boldest.





## Life's for living.

With SEAT CARE, you benefit from a package of SEAT After Sales services at a fixed and competitive monthly rate. Value for money, with the service you expect. Starting from XX€/month, you can save up to 50% compared to standard costs. No worries. For more fun.



## Go the extra mile. We've got your back.

The SEAT Warranty Extension lets you extend your 2-year manufacturer's warranty for 1, 2 or 3 years, or up to 100,000 km – whatever comes first. And if your car is new, the warranty comes included. Easy. Cost-effective. Ready for bolder living.



## Whatever you need. Just ask.

Want a tow? More fuel? On-the-spot repair? SEAT Mobility Service is here for you. 24/7. Everywhere in the EU, plus most neighbouring countries. For up to 10 years. This is complete, reliable roadside assistance. And best of all? If your SEAT is new, you get 2 years free.



## Play harder. We'll keep you on track.

SEAT Insurance is tailor-made to your car. To make moving forward easy. Our 24-hour customer service and official workshops using only SEAT Genuine Parts get you back on the road. Vandalism or theft? No problem. We're your ride.



## Challenge ahead. Worries behind.

Live life to the fullest. SEAT Service & Maintenance contracts cover most services in the SEAT Service Programme for the first 3, 4 or 5 years of ownership. Available in Basic or Premium, with options for financing. So you can put your positivity into what really matters.



# Environmental information.

## SEAT Eco Drive Profile



ECO Mode allows a driving style that respects the environment, modifying engine and transmission parameters in order to reduce fuel consumption and emissions.



## Renewable materials



Presence of renewable materials like cotton, natural rubber and cellulose/paper in different parts of the vehicle.

## Engines



Engine TGI. Combine petrol and compressed natural gas (CNG), saving up to 30% compared to a petrol engine only. Reduce CO<sub>2</sub> emissions and improve the air quality.

## Air quality



Diesel engines incorporate an optimised exhaust gas treatment system to further minimise NO<sub>x</sub> emissions (AdBlue mono dosing).

## Lighting



Integrating Full LED headlights and LED daytime running lights reduces electricity consumption and increases the headlights life expectancy output.

## Manufacturing



State-of-the art manufacturing processes lower CO<sub>2</sub> emissions per car manufactured by 55% and energy consumed per car by 22%. Reduction of 56% of residues generated per car and water consumption per car reduced by 31%. Improved internal cleaning of robots used in paint stations with the use of products free of volatile organic compounds (VOCs).

## Air conditioning



Using the new R1234YF coolant reduces global warming potential by 99.7%.

## Acoustics



Full compliance with the new noise regulations thanks to improvements introduced to the exhaust pipes and to the acoustic package.

## Fuel tank



Improvements made to the system help reduce the weight and volume of a full tank, without losing autonomy.

## Seats



The use of new PUR foam formulations reduces the emissions of volatile organic compounds (VOCs) in the cabin interior.

## Tyres



Tyres with a low rolling resistance.



### SEAT's technical development environmental objectives



Climate protection.



Preservation of resources.



Health protection.





SEAT is committed to a policy of continuous product development and reserves the right to make changes to specifications, colours and prices without notice. The information in this brochure can therefore be given as guidance only. While SEAT makes every effort to ensure that specifications are accurate at the time of publication, you should always check with your authorised SEAT Partner for the latest information. Due to limitations of the printing process the colours reproduced in this brochure may vary slightly from the actual paint colour and material. This vehicle and all its parts, as well as the original spares, were designed according to the Legal Regulations governing the prevention and minimisation of Environmental Impact, through the use of recycled/recyclable materials, with measures taken to achieve suitable recycling for the conservation and improvement of environmental quality.