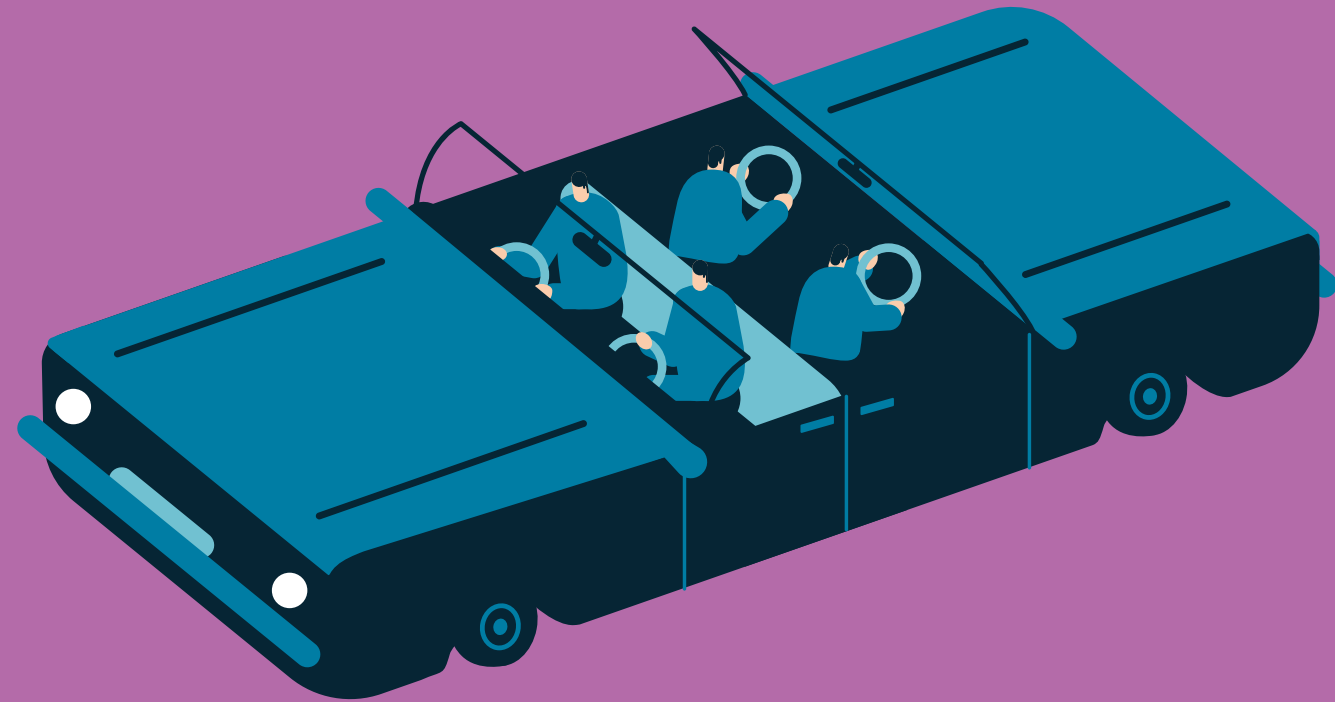


 SEAT



SEAT
Ibiza



Your technical bit.

Data &
Equipment.

Safety	Reference	Style	Xcellence	FR
Tool kit	●	●	●	●
Emergency spare wheel + Tool kit and jack	○	○	○	-
Electronic Stability Control	●	●	●	●
Three rear head restraints	●	●	●	●
Rear drum brakes ¹	●	●	●	-
Seat belt reminder, electric contact in buckle	●	●	●	●
Three-point seat belts	●	●	●	●
Tyre fit	●	●	●	●
Power locking with remote control	●	●	-	●
Central locking system "Keyless Entry" ²	-	○	●	○
Central locking system "Keyless Entry" with Safelock ²	-	○	-	○
Alarm with Safelock ³	○	○	○	○
Rear parking sensor with park distance control	-	○	●	○
Hill Hold Control	●	●	●	●
Cruise Control System	-	-	●	●
Vision Pack: Park distance control (front and rear)	-	○	○	○
Vision Plus Pack: Park distance control (front and rear) Rear View Camera	-	○	○	○
Safe & Driving Pack S Separate daytime running lights with automatic headlight activation Onboard Computer Forward collision warning including autonomous emergency braking Windshield wiper with intermittent control and photosensor Speed limiter Electronic Stability Control (ESC) Seat belt reminder with advanced safety equipment	○	○	○	○

● Standard
○ Optional
- Not available

¹ Rear disk brakes for engines > 100 HP.

² Requires alarm.

³ Xcellence maintains "Keyless Entry" with Safelock instead of radio remote.

⁴ Not compatible with 1.0 MPI engines.

⁵ Not compatible with TGI engines.

* This reduced spare wheel will be available until w.48, 2020.

⁶ Includes reading lights in ceiling.

Requires Radio with Bluetooth[®].

⁷ Only available for engines > 100 HP.

⁸ Standard for Xcellence with 1.5 TSI 150 HP engine.

⁹ Requires spare wheel (Not compatible with Reduced spare wheel 14").

¹⁰ With "X" pin for Xcellence and "FR" pin for FR.

Our global range of cars and product specifications varies from country to country. Please, visit your local SEAT website to know more about the product offer available for you.

Safety	Reference	Style	Xcellence	FR
Safe & Driving Pack M^{4,5} Forward collision warning incl. autonomous emergency braking Adaptive Cruise Control and speed limiter	-	○	○	○
Side airbag in front, with curtain airbag	●	●	●	●
Driver and front passenger airbag with passenger airbag deactivation	●	●	●	●
Indirect tyre pressure monitoring system	●	●	●	●
Exterior Sunroof ^{5,6,7}	-	-	-	○
Dark-tinted windows Side windows in heat-insulating glass and rear tinted windows	-	○	○	○
Exterior door handles and mirror cases in black	●	-	-	-
Power-folding, power-adjustable and heated exterior mirrors	-	-	●	●
Body-coloured bumpers	●	●	-	-
FR sport bumpers	-	-	-	●
Urban 15" 20/1 Steel Wheels	●	●	-	-
Enjoy 15" 20/1 Alloy Wheels	○	○	●	-
Design 16" 20/1 Alloy Wheels	-	○	-	-
Urban 16" Black R Alloy Wheels	-	○	○	-
Design 16" 20/3 Machined Alloy Wheels ⁸	-	-	○	-
Dynamic 17" 20/1 Machined Alloy Wheels	-	-	○	-
Dynamic 17" 20/2 Alloy Wheels	-	-	-	●
Performance 18" 20/1 Alloy Wheels ⁵	-	-	-	○
All season tyres 15" Alloy Wheels	○	○	○	-
Spare wheel with original steel wheel size ⁵	○	○	○	-
Reduced spare wheel 14" ^{15*}	○	○	○	○
Reduced spare wheel 15" ¹⁵	-	○	○	○
Emergency spare wheel 18" (minimised) ⁵	○	○	○	○
Twin halogen headlights with halogen daytime running lights	●	●	-	-

Exterior	Reference	Style	Xcellence	FR
Twin halogen headlights with LED daytime running lights	-	-	●	●
Halogen tail lights	●	●	-	-
LED tail lights	-	-	●	●
Rear fog light	●	●	●	●
Front fog lights with cornering function	-	○	●	●
Separate daytime running lights with automatic head light activation and Coming Home feature	-	-	●	●
Full LED Pack for Style LED license plate lighting LED headlights Dynamic headlight range control (self-adjusting while driving) LED tail lights Front fog lights Interior light in footwell and central console Interior ambient light	-	○	-	-
Full LED Pack for Xcellence and FR LED license plate lighting LED headlights Dynamic headlight range control (self-adjusting while driving)	-	-	○	○
Towing device, including removable and lockable trailer hitch, tool kit, jack ^{5,9}	○	○	○	○
Interior Leather multifunctional steering wheel ¹⁰	-	●	●	●
Right-hand drive	○	○	○	○
Trim specific seats	●	●	●	●
Reference comfort seats	●	-	-	-
Style comfort seats	-	●	-	-
Xcellence seats	-	-	●	-
FR Sport seats	-	-	-	●
Split and folding rear seats	-	●	●	●
Seat trim covers for special editions	-	-	-	-
Luggage pockets on front seats backrest	-	-	●	-

Interior	Reference	Style	Xcellence	FR
Height-adjustable driver seat	●	●	-	-
Height-adjustable front seats (driver and passenger)	-	-	●	●
Chrome Pack High	-	●	●	●
Door panels in PVC	●	●	-	-
Interior door and side trim panel with textile and decorative moulding	-	-	●	-
Leatherette PAD ¹¹	-	-	○	●
Bright decorative mouldings	-	-	●	-
Foldable trunk cover	●	●	●	●
Breakaway interior rearview mirror, auto-dimming	-	-	●	●
Leather gear knob	-	●	●	●
Leather parking brake	-	●	●	●
Grey greenhouse	●	●	-	-
Black greenhouse	-	-	●	●
Storage Pack: Front centre armrest Drawer under left front seat	-	-	●	-
Interior Pack¹²: Drawers under front seats Mounting fixture in luggage compartment Plane rear cargo area Front centre armrest	-	○	○	○
Luxe Pack^{13,14}: Comfort seats in front Dinamica® Black Sport seats Interior door side trim panel with textile and dashboard in simil leather Three rear head restraints Luggage pockets on backrest front seats	-	-	○	○
Red Pack^{12,15}: Three-point seat belts in red Disk brakes in front and rear Dual ride	-	-	-	○

● Standard
○ Optional
- Not available

¹¹ Not available with Luxe Pack.

¹² Not compatible with TGI engines.

¹³ Requires Safe & Driving Pack S / Safe & Driving Pack M.

¹⁴ Not available with Leatherette PAD.

¹⁵ Only available for engines > 100 HP.

¹⁶ Available for Reference with optional Cool & Sound Pack.

¹⁷ Compatible with Android Auto™, Apple CarPlay™ & MirrorLink™.

¹⁸ Requires Vision Plus Pack or Navì system 8".

¹⁹ Requires emergency spare wheel 18" (minimised).

Our global range of cars and product specifications varies from country to country. Please, visit your local SEAT website to know more about the product offer available for you.

Interior	Reference	Style	Xcellence	FR
Colour & Trim Style: Chromed upper front grille frame Style comfort seats Driver sunvisor with mirror and card holder Chrome Pack Basic Door handles and mirror case painted in body colour	-	●	-	-
Colour & Trim Xcellence: Front grille with hot stamping Net on central console passenger Chromed side window frame Driver sunvisor with mirror and card holder Hight trims dashboard Front fog lights frame with decorative inserts Painted door handles and mirror cases Aluminium door step with "Xcellence" engraving Xcellence seats Chromed instrument panel Gear knob with decorative inserts Black greenhouse	-	-	●	-
Colour & Trim FR: Chromed front grille frame Rear FR spoiler with double "design" exhaust pipe Painted window frames in Brilliant Black Driver sunvisor with mirror and card holder Door handles and mirror painted FR logo Front fog lights frame with decorative inserts Chromed instrument panel Gear knob with decorative inserts FR sport seats Hight trims dashboard	-	-	-	●

Electronics	Reference	Style	Xcellence	FR
Electrically-adjustable exterior mirrors	●	●	-	-
Fresh air intake system with combination filter	-	-	●	●
Climatronic with Air-care filter	-	-	●	●
Windshield wiper with intermittent control and potentiometer (four speeds)	●	●	-	-
Windshield wiper with intermittent control and light and rain sensor	-	-	●	●
Rear window wiper and washer system with intermittent control	●	●	●	●
Dimming interior Rear View Mirror	●	●	-	-
Tiredness Recognition	-	-	●	●
Electronic vehicle immobilization device	●	●	●	●
Single-tone horn	●	●	●	●
Manually controlled heating system	●	-	-	-
Manually controlled air conditioning ¹⁶	-	●	●	●
Dust and pollen filter ¹⁶	●	●	-	-
2 foldable keys with remote control function	●	●	●	●
Front reading lights on driver and passenger	-	●	●	●
Interior light in footwell, central console and door panel	-	-	●	●
6 speakers	-	●	●	●
USB type C socket ¹⁶	-	●	●	●
Radio 6.5" (Generation 2) ¹⁶	-	●	●	●
Bluetooth® ¹⁶	-	●	●	●
Antenna for AM/FM reception ¹⁶	-	○	○	○
Full Link technology ¹⁷	-	○	○	○
SEAT Digital Cockpit ¹²	-	○	○	○
DAB (Digital Audio Broadcasting) ¹⁸	○	○	○	○
BeatsAudio™ with luggage compartment lining ^{12,19}	-	○	○	○

Electronic	Reference	Style	Xcellence	FR
Connectivity Box ¹⁸	-	○	○	○
Navigation Maps	-	○	○	○
Navigation Maps with MapCare	-	○	○	○
SEAT Drive Profile with ECO function ^{20,21}	-	-	○	●
Driver Pack^{22,23}: Tiredness Recognition System Cruise Control System (CCS)	○	○	●	●
Comfort Pack: Power-folding, power-adjustable and heated exterior mirrors Climatronic with Air-care filter Auto-dimming, breakaway interior rear view mirror Fresh air intake system with combination filter Separate daytime running lights with automatic headlight activation and Coming Home function Windshield wiper with intermittent control and light and rain sensor Power windows with comfort operation and circuit breaker	-	○	●	●
Cool & Sound: Radio 6.5" (Generation 2) 4 speakers Antenna for AM/FM reception USB type C socket Bluetooth® Dust and pollen filter Manually controlled air conditioning Onboard Computer Plus Multifunctional steering wheel Front reading lights for driver and passenger	○	-	-	-

● Standard
○ Optional
- Not available

²⁰ Not compatible with 1.0 MPI engines.

²¹ Not compatible with TGI engines.

²² Requires multifunctional steering wheel.

²³ Requires Safe & Driving Pack S / Safe & Driving Pack M.

²⁴ Requires SEAT CONNECT Gen3.

²⁵ Connected car services for Radio including private Emergency Call, safety services for 10 years and remote access for 1 year (after this period renewals are needed). Data not included.

²⁶ Connected car services for Navi including private Emergency Call, safety services for 10 years, remote access for 1 year and online infotainment for 1 year (after this period renewals are needed). Data not included. Requires Navi System.

Our global range of cars and product specifications varies from country to country. Please, visit your local SEAT website to know more about the product offer available for you.

Electronic	Reference	Style	Xcellence	FR
Navigation System²⁴ Infotainment system 8" (MIB3) Navigation system Antenna for AM/FM reception Voice control External USB type C socket Full Link	-	○	○	○
SEAT CONNECT for Media System ²⁵	●	●	●	●
SEAT CONNECT for Navi System ²⁶	-	●	●	●
Winter Pack: Seat heater for front seats, separately controlled Height-adjustable front seats Power-folding, power-adjustable and heated exterior mirrors	○	○	○	○

Others	Reference	Style	Xcellence	FR
Non-smoker's package	●	●	●	●
Reference Plus Pack: Front fog lights with cornering function Power windows with comfort operation and circuit breaker Split, folding rear seats Park distance control (rear)	○	-	-	-

Accessories.

Performance

Machined Black 18" Alloy Wheel	6F0071498
Sport Black 18" Alloy Wheel	6F4071498 - 5F0601171 CBX
Hub cap - Desire Red	6F0071409C OX1
Hub cap - Mystery Blue	6F0071409C W5L
Machined Black 17" Alloy Wheel	6F0071497
Machined Sport Black 18" Alloy Wheel	6F0071498D 10V
Centre insert - Silver	6F0071409D
Centre insert - Desire Red	6F0071409B
Centre insert - Mystery Blue	6F0071409
Machined Cosmo Grey 17" Alloy Wheel	6F0071497G 67E
Anti-theft screws for rims	000071510A
Front styling kit	6F0071606 GRU
Side skirts	6F0071685 GRU
Rear Bumper Diffuser	6F0071611 9B9
Rear Spoiler	6F0071640 GRU

Exterior

Chromed hatchback moulding	6F0071360
Black hatchback moulding	6F0071360A
Exterior mirror covers - Piano Black	6F0072530 041
Exterior mirror covers - Desire Red	6F0072530 OX1
Exterior mirror covers - Mystery Blue	6F0072530 W5L

Interior

Additional interior mirror	000084418A
Interior mirror - Black	6F0072540 041
Interior mirror - Desire Red	6F0072540 OX1
Interior mirror - Mystic Magenta	6F0072540 S4Y
Interior mirror - Mystery Blue	6F0072540 W5L
Internal mirror electrochromed - Black	6F0072540A 041
Internal mirror electrochromed - Desire Red	6F0072540A OX1
Internal mirror electrochromed - Mystic Magenta	6F0072540A S4Y
Internal mirror electrochromed - Mystery Blue	6F0072540A W5L
Centre console mats "Barcelona streets" - Set of 4 mats	6F0061169
Centre console mats "Barcelona streets" - Set of 3 mats	6F0061169A
Arm rest - leather	6F0061123 XU2
Arm rest - fabric	6F0061123 LI8
Spherical cup holder	1SL061129A

Interior

Net between seats - Black	6F0017221A
Net between seats - Desire Red	6F0017221B OX1
Net between seats - Mystic Magenta	6F0017221B S4Y
Net between seats - Mystery Blue	6F0017221B W5L
Foil side sills	6F0071310
Illuminated side sills	6J0071691C
Side sun shades	6F0064365
Rear sun shades	6F0064365A
Espresso machine	000069641
Storage pocket	000061680B

Sport customisation

Steering wheel	6F0072390 OX1
Gear knob 5 sp	6F0064230 OX1
Gear knob 6 sp	6F0064230A OX1
Key cover	6F0087013C
Pedals	6F0064200 OX1
Footrest	6F0071750A OX1
Inox side sills	6F0071691
Exterior sticker	6F0071316C

Urban Tech customisation

Steering wheel	6F0072390 W5L
Gear knob 5 sp	6F0064230 W5L
Gear knob 6 sp	6F0064230A W5L
Key cover	6F0087013B
Pedals	6F0064200 W5L
Footrest	6F0071750A W5L
Inox side sills	6F0071691A
Exterior sticker	6F0071316B

Trend customisation

Steering wheel	6F0072390 S4Y
Gear knob 5 sp	6F0064230 S4Y
Gear knob 6 sp	6F0064230A S4Y
Key cover	6F0087013A
Pedals	6F0064200 S4Y
Footrest	6F0071750A S4Y
Inox side sills	6F0071691B
Exterior sticker	6F0071316A

Transport

Surf rack	000071120HA
Ski rack - 4 pairs	000071129S
Ski rack - 6 pairs	000071129T
Ski rack xtender	000071129R
Load-Stop rack	000071223
Roof box - 400l	000071200T
Roof box - 420l	000071200AB
Roof box - 450l	000071180A
Roof Bars	6F0071151 - 6F0071151A
Bike rack	5F9071128
Electric kit with pre-installation	6F0055204
Electric kit without pre-installation	6F1055204A
Electric kit without pre-installation (Right hand drive vehicles)	6F2055204A
Tow bar bike rack for 2 bikes	000071128K
Kit 3 rd bike extension	000071128J
Tow bar bike rack	000071128H
Tow bar	6F0803881
Towing bike rack	000071128G

Protection

Front mud flaps	6F0075111
Rear mud flaps	6F0075101
Tyre cover	000071770C
Black car cover	6F0061701A
White car cover	6F0061701
Rear bumper protective film	6F0071363
Key cover - FR	000087013AE
Key cover - SEAT Logo	000087013AF
Key cover - CUPRA	000087013AJ
Rubber mats	6F1061500 041
Rubber mats (Right hand drive vehicles)	6F2061500 041
Textile mats Trail	6F1061675 041
Textile mats Serie	6F1863011 LOE
Foldable trolley for boot	000061109G
Organisational drawer	000061109F

Our global range of cars and product specifications varies from country to country. Please, visit your local SEAT website to know more about the product offer available for you.

Protection

Textile mats Serie (Right hand drive vehicles)	6F2863011 LOE
Textile mats Velpic®	6F1061675A 041
Boot organiser	575061205A
Separation grille	6F0017221
Foam boot tray	6F0061180
Semi rigid boot tray	6F0061180A
Reversible boot mat without double level	6F0061210
High walls boot tray	6F0061201
Seat belt pad	000069629B
Ice scrapper	000096010D
Boot protector for dogs	000061609D
Protective seat cover for dogs	000061609C

Infotainment

GPS Ultra	000051818CG
Holder with magnetic suction cup	000051991K
Parrot® MiniKit Neo 2 HD - Black	000051473AE041
Start 42 EU 23 countries (Lifetime maps)	000051818AQ
Start 62 EU 45 (Lifetime maps)	000051818CE
GO 520 EU 45 (Lifetime maps)	000051818CJ
GO 620 EU 45 (Lifetime maps)	000051818CK
GO 5200 EU 45 (Lifetime maps)	000051818CL
GO 6200 EU 45 (Lifetime maps)	000051818CM
Twonav Anima+ GPS	000051818CH
Universal magnetic mount	000061129F
SEAT Full Link	5F0054830
Inductive charger	000051763Q
USB to type C adapter	000051444AP

Security

ISOFIX Duo Plus	000019909G
SEAT PEKE® G1 I-Size Trifix	000019909F
SEAT PEKE Peke GO I-Size Plus	000019907A
ISOFIX Baby-safe Plus SHR II	000019907B
Kidfix² S	000019906S
Child safety Kidfix XP	000019906M
Top Tether Safety Belt	3R0019900
9,900 mAh battery jump starter	000051763F
20,000 mAh battery jump starter + charger	000051763H
Warning triangle	000093056A
2 Emergency triangle pack	000093600C
Fluorescent vest	000093056J
Safety Pack (triangles + vest)	000093990R
Triangle fastening support	6K0860265
First-aid kit	6L0093000
Safety dog harness - Size XL	000084310B
Safety dog harness - Size L	000084310C
Safety dog harness - Size M	000084310D
Safety dog harness - Size S	000084310E
Help flash	000052122A
Kaza live alert smartwatch	000054635E
Tiredness recognition system	6F0060884

Snow chains:

Autosock (185/70 R14)	000091375AE
Autosock (185/65 R15)	000091375AE
Autosock (195/55 R16)	000091375AE
Autosock (215/45 R17)	000091301B
Autosock (215/40 R18)	000091301B
Turisport (185/70 R14)	000091303C
Turisport (185/65 R15)	000091303D
Easygrip (185/70 R14)	000091375H
Easygrip (185/65 R15)	000091375G
Easygrip (195/55 R16)	000091375EM

Maintenance

Insect remover	000096320FRABH
Interior cleaner	000096320FRABK
Dashboard Cleaner	000096320FRABM
300ml concentrated shampoo	000096320GFAAB
300ml windscreen wash	000096320GFAAD

Maintenance

Summer maintenance kit	000096354B
Winter maintenance kit	000071980BPADA
Touch-up pencil Candy White	000098500L B9A
Touch-up pencil Mediterranean Blue	000098500LMS11
Touch-up pencil Mystic Magenta	000098500LMS4Y
Touch-up pencil Eclipse Orange	000098500LMW2Y
Touch-up pencil Mystery Blue	000098500LMW5L
Touch-up pencil Desire Red	000098500LMOX1
Touch-up pencil Urban Silver	000098500LMZ7G
Touch-up pencil Magnetic Tech	000098500LMS7H
Touch-up pencil Midnight Black	000098500LMY9T
Touch-up pencil Nevada White	000098500LMS9R

Child car seats

	Age (approximate)
SEAT PEKE Peke GO I-Size Plus	Up to 15 months
ISOFIX BABY-SAFE PLUS SHR II	Up to 15 months
SEAT PEKE G1 I-Size Trifix	9 months to 4 years
ISOFIX Duo Plus	9 months to 4 years
Kidfix² S	3,5 to 12 years
Child safety Kidfix XP	4 to 12 years

Engine specs.

Engine	1.0 MPI 80 HP (59 kW) MQ Start/Stop	1.0 TSI 95 HP (70 kW) MQ Start/Stop ¹ MQ Start/Stop ²	1.0 TSI 110 HP (81 kW) MQ Start/Stop ³ DQ Start/Stop
Cylinder/Valve (total)	3/12	3/12	3/12
Displacement (cc)	999	999	999
Cylinder bore and stroke (mm)	74.5x76.4	74.5x76.4	74.5x76.4
Compression ratio	12	10.5	10.5
Maximum power (kW [HP]/rpm)	59 [80] / 6,300	70 [95] / 5,000-5,500	81 [110] / 5,500
Maximum torque (Nm/rpm)	93 / 3,750	175 / 2,000-3,500	200 / 2,000-3,500
Fuel supply system	Multipoint injection	TSI-Direct Injection	TSI-Direct Injection
Ignition	Positiv Ignition (Electronic map-controlled ignition)		
Atmospheric/Supercharged	Natural aspirated	Turbo charged	Turbo charged
Fuel type	Petrol / ROZ 95	Petrol / ROZ 95	Petrol / ROZ 95
Oil capacity in initial fill (l)	4.3	4.3	4.3
Alternator (A)	110A (8GD/ 8GG)	110	110
Battery (Ah/A)	59 Ah (J0S)	59	59
Performance			
Maximum speed (km/h)	169 [4°]	182 [4°] 188 [5°]	195 [5°] 195 [6°]
Acceleration 0-80 km/h (s)	9.6	7.2 7.3	6.8 6.9
Acceleration 0-100 km/h (s)	15.3	10.9 10.9	10.2 10.0
Acceleration 80-120 km/h (s)	17.9	10.9 11.6	10.7 11.0
Acceleration 1000 m (s)	35.9	32.8 32.9	32 31.9
Fuel consumption			
Urban (l/100 km)	-	-	-
Extra urban (l/100 km)	-	-	-
Combined (l/100 km)	-	-	-
Combined WLTP Range (l/100 km)	-	-	-
CO₂ mass emission			
CO ₂ Urban (g/km)	-	-	-
CO ₂ Extra Urban (g/km)	-	-	-
CO ₂ Combined (g/km)	-	-	-
Combined WLTP Range (l/100 km)	-	-	-
Transmission			
Gearbox type	MQ200-5F	MQ200-5F	MQ200-6F DQ200-7F

The data shown is provisional

Chassis	1.0 MPI 80 HP (59 kW) MQ Start/Stop	1.0 TSI 95 HP (70 kW) MQ Start/Stop ¹ MQ Start/Stop ²	1.0 TSI 110 HP (81 kW) MQ Start/Stop ³ DQ Start/Stop
Front suspension	Independent type McPherson - coil springs - hydraulic shock absorber [Variable shock absorber settings (switchable shock absorber)]		
Rear suspension	Semirigid axle, coil springs and hydraulic shock absorber [Variable shock absorber settings (switchable shock absorber)]		
Steering System	C-EPS (Column Electric Power System)		
Turning diameter (m)	10.6		
Brake system	ESC Standard (including HHC, EBA, TCS, EDS, RKA, XDS)		
Front/Rear brake type	Ventilated front brakes / Drum brakes in rear axle		
Front brakes (mm)	Ø 256x22	Ø 256x22	Ø 276x24
Rear brakes (mm)	TB 203x38	TB 228x42	Ø 230x9
Wheels			
Rims	5.5Jx15 ET40 / 6.5Jx16 ET47 7Jx17 ET51 / 7Jx18 ET51	5.5Jx15 ET40 / 6.5Jx16 ET47 7Jx17 ET51 / 7Jx18 ET51	5.5Jx15 ET40 / 6.5Jx16 ET47 7Jx17 ET51 / 7Jx18 ET51
Tyres	185/65 R15 88H - 185/65 R15 88V 195/55 R16 91V XL - 215/45 R17 91W XL 215/40 R18 91W XL	185/65 R15 88H - 185/65 R15 88V 195/55 R16 91V XL - 215/45 R17 91W XL 215/40 R18 91W XL	185/65 R15 88H - 185/65 R15 88V 195/55 R16 91V XL - 215/45 R17 91W XL 215/40 R18 91W XL
Dimensions			
Body type	5D		
Length/width/height (mm)	4,059/1,780/1,444		
Wheelbase (mm)	2,564		
Track front/rear (mm)	1,525/1,505		
Boot capacity (l)	355 (TGI 262)		
Fuel tank capacity (l)	40 (TGI 9)		
Weights			
In running order with driver (kg)	1,102	1,128	1,148 1163
Maximum weight with driver (kg) Front/Rear	655 / 447	676 / 452	702 / 446 720 / 443
Maximum weight allowed (kg)	1,620	1,640	1,670 1,680
Maximum weight without brake (kg)	540	560	570 580
Maximum weight w/brake 8% (kg)	1,000	1,100	1,200
Maximum weight w/brake 12% (kg)	800	1,000	1,100

¹ This engine will be available until w.44, 2020.
² This engine will not be available until w.44, 2020.
³ This engine will not be available until w.45, 2020.

Engine specs.

Engine	1.0 TSI 110 HP (85 kW) MQ Start/Stop ¹	1.5 TSI 150 HP (110 kW) DQ Start/Stop	1.0 TGI 90 HP (66 kW) MQ Start/Stop	1.6 TDI 95 HP (70kW) MQ Start/Stop ²
Cylinder/Valve (total)	3/12	4/16	3 / 12	4 / 16
Displacement (cc)	999	1,498	999	1,598
Cylinder bore and stroke (mm)	74,5x76,4	74,5x85,9	74,5x76,4	79,5x80,5
Compression ratio	10,5	10,5	10,5	16,2
Maximum power (kW [HP]/rpm)	85 (115) / 5,000-5,500	110 (150) / 5,000-6,000	66 (90) / 4,000-5,500	70 (95) / 2,750-4,600
Maximum torque (Nm/rpm)	200 / 2,000-3,500	250 / 1,500-3,500	160 / 1,800-3,800	250 / 1,500-2,600
Fuel supply system	TSI-Direct Injection	TSI-Direct Injection	TSI-Direct Injection / TGI mode: Multipoint injection	Direct injection: Common Rail
Ignition	Positiv Ignition (Electronic map-controlled ignition)			Compressed ignition
Atmospheric/Supercharged	Turbo charged	Turbo charged	Turbo charged	Turbocharged
Fuel type	Petrol / ROZ 95	Petrol / ROZ 95	ROZ 95 / TGI	Diesel
Oil capacity in initial fill (l)	4,3	4,8	4,3	5
Alternator (A)	110	110	110	110 /140
Battery (Ah/A)	59	59	59	70
Performance				
Maximum speed (km/h)	193 [5 ^a]	219 [6 ^a]	184 [5]	182 [4 ^a]
Acceleration 0-80 km/h [s]	6,4	6	8,2	7,5
Acceleration 0-100 km/h [s]	9,3	8,2	12,1	11,3
Acceleration 80-120 km/h [s]	10,9	10,1	14,6	10,9
Acceleration 1000 m [s]	30,8	29	34,3	33,3
Fuel consumption				
			TSI mode	TGI mode
Urban (l/100 km)	-	-	-	-
Extra urban (l/100 km)	-	-	-	-
Combined (l/100 km)	-	-	-	-
Combined WLTP Range (l/100 km)	-	-	-	-
CO₂ mass emission				
CO ₂ Urban (g/km)	-	-	-	-
CO ₂ Extra Urban (g/km)	-	-	-	-
CO ₂ Combined (g/km)	-	-	-	-
Combined WLTP Range (l/100 km)	-	-	-	-
Transmission				
Gearbox type	MQ200-6F	DQ200-7F	MQ200-6F	MQ250-5F

The data shown is provisional

Chassis	1.0 TSI 110 HP (85 kW) MQ Start/Stop ¹	1.5 TSI 150 HP (110 kW) DQ Start/Stop	1.0 TGI 90 HP (66 kW) MQ Start/Stop	1.6 TDI 95 HP (70kW) MQ Start/Stop ²
Front suspension	Independent type McPherson - coil springs - hydraulic shock absorber [Variable shock absorber settings (switchable shock absorber)]			
Rear suspension	Semirigid axle, coil springs and hydraulic shock absorber [Variable shock absorber settings (switchable shock absorber)]			
Steering System	C-EPS (Column Electric Power System)			
Turning diameter (m)	10,6			
Brake system	ESC Standard (including HHC, EBA, TCS, EDS, RKA, XDS)			
Front/Rear brake type	Ventilated front brakes / Disc brakes in rear axle			
Front brakes (mm)	Ø 276x24	Ø 276x24	Ø 256x22	Ø 276x24
Rear brakes (mm)	Ø 230x9	TB 230x9	TB 228x42	TB 228x42
Wheels				
Rims	5.5Jx15 ET40 - 6.5Jx16 ET47 7Jx17 ET51 - 7Jx18 ET51	5.5Jx15 ET40 - 6.5Jx16 ET47 7Jx17 ET51 - 7Jx18 ET51	5.5Jx15 ET40 - 6.5Jx16 ET47 7Jx17 ET51 - 7Jx18 ET51	5.5Jx15 ET40 - 6.5Jx16 ET47 7Jx17 ET51 - 7Jx18 ET51
Tyres	185/65 R15 88H - 185/65 R15 88V 195/55 R16 91V XL - 215/45 R17 91W XL 215/40 R18 91W XL	185/65 R15 88H - 185/65 R15 88V 195/55 R16 91V XL - 215/45 R17 91W XL 215/40 R18 91W XL	185/65 R15 88H - 185/65 R15 88V 195/55 R16 91V XL - 215/45 R17 91W XL 215/40 R18 91W XL	185/65 R15 88H - 185/65 R15 88V 195/55 R16 91V XL - 215/45 R17 91W XL 215/40 R18 91W XL
Dimensions				
Body type	5D			
Length/width/height (mm)	4,059/1,780/1,444			
Wheelbase (mm)	2,564			
Track front/rear (mm)	1,525/1,505			
Boot capacity (l)	355 (TGI 262)			
Fuel tank capacity (l)	40 (TGI 9)			
Weights				
In running order with driver (kg)	1,134	1,199	1,250	1,243
Maximum weight with driver (kg) Front/Rear	689 / 445	754 / 445	682 / 568	786 / 457
Maximum weight allowed (kg)	1,660	1,720	1,690	1,750
Maximum weight without brake (kg)	570	590	-	620
Maximum weight w/brake 8% (kg)	1,200	1,200	-	1,200
Maximum weight w/brake 12% (kg)	1,100	1,200	-	1,100

¹This engine will be available until w.45, 2020.

²This engine will be available until w.47, 2020.

Engine specs.

	Reference	Style	Xcellence	FR
TSI and TGI				
1.0 MPI 80 HP [59 kW] MQ Start/Stop	○	○	○	○
1.0 TSI 95 HP [70 kW] MQ Start/Stop ¹	○	○	○	○
1.0 TSI 95 HP [70 kW] MQ Start/Stop ²	○	○	○	○
1.0 TSI 110 HP [81 kW] MQ Start/Stop ³	-	○	○	○
1.0 TSI 110 HP [81 kW] DQ Start/Stop	-	○	○	○
1.0 TSI 110 HP [85 kW] MQ Start/Stop ⁴	-	○	○	○
1.5 TSI 150 HP [110 kW] DQ Start/Stop	-	-	○	○
1.0 TGI 90 HP [66 kW] MQ Start/Stop	○	○	○	○
TDI				
1.6 TDI 95 HP [70 kW] MQ Start/Stop ⁵	○	○	○	○

Exterior colours.

	Reference	Style	Xcellence		FR
	Exterior door handles & exterior mirror case	Body	Body	Exterior door handles & exterior mirror case	Exterior door handles & exterior mirror case
	Black			Atom Grey	Brilliant Black
Candy White	○	○	○	○	○
Pure Red	○	○	○	○	○
Mystery Blue	○	○	○	○	○
Desire Red	○	○	○	○	○
Urban Silver	○	○	○	○	○
Magnetic Tech	○	○	○	○	○
Midnight Black	○	○	○	○	○
Nevada White	○	○	○	○	○

○ Optional
- Not available

¹ This engine will be available until w.44, 2020.

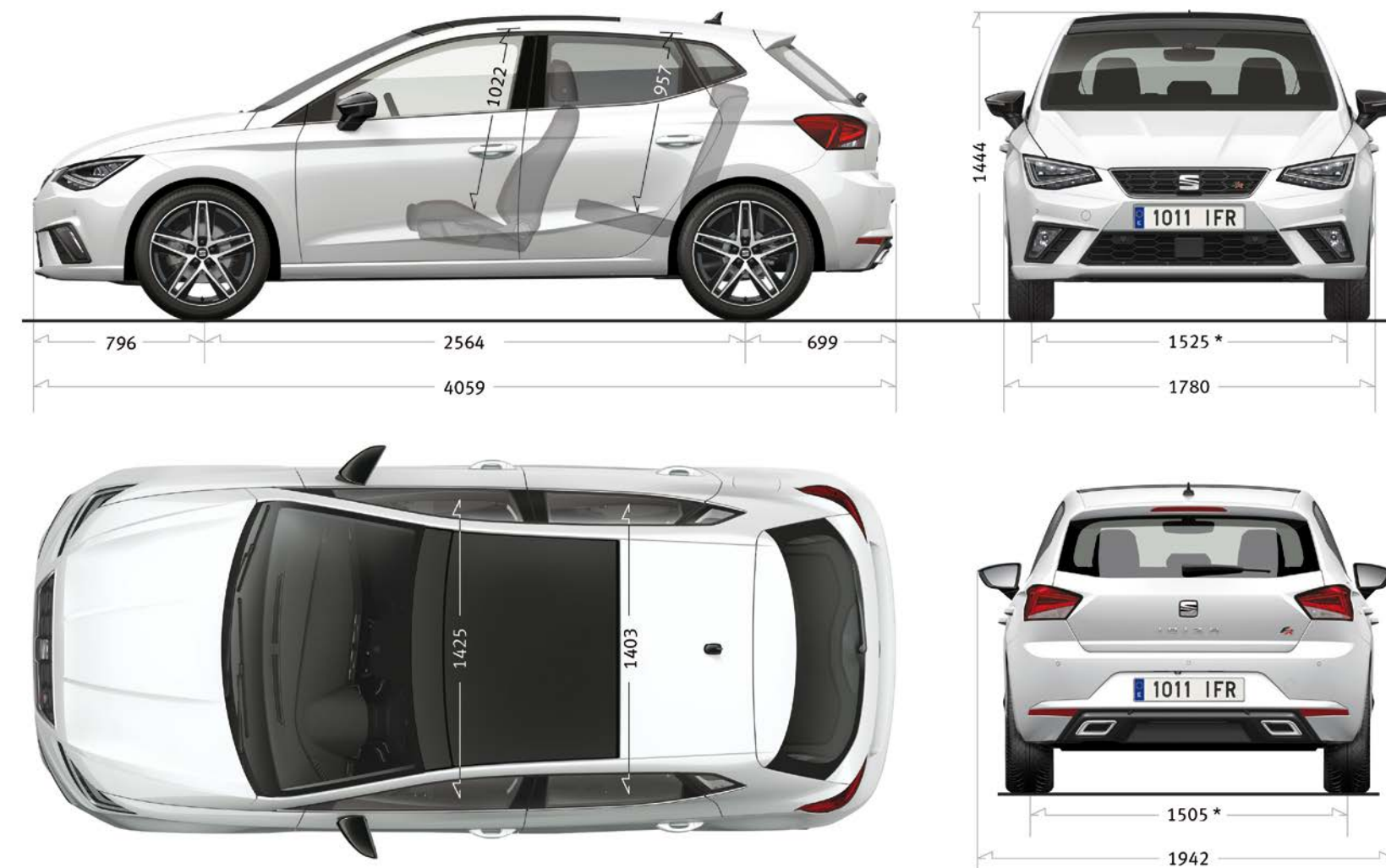
² This engine will not be available until w.44, 2020.

³ This engine will not be available until w.45, 2020.

⁴ This engine will be available until w.45, 2020.

⁵ This engine will be available until w.47, 2020.

Dimensions.



For more information about official fuel consumption and CO₂ emissions values visit your local SEAT website. Our global range of cars and product specifications varies from country to country. Please, visit your local SEAT website to know more about the product offer available for you.



SEAT is committed to a policy of continuous product development and reserves the right to make changes to specifications, colours and prices without notice. The information in this brochure can therefore be given as guidance only. While SEAT makes every effort to ensure that specifications are accurate at the time of publication, you should always check with your authorised SEAT Partner for the latest information. Due to limitations of the printing process the colours reproduced in this brochure may vary slightly from the actual paint colour and material. This vehicle and all its parts, as well as the original spares, were designed according to the Legal Regulations governing the prevention and minimisation of Environmental Impact, through the use of recycled/recyclable materials, with measures taken to achieve suitable recycling for the conservation and improvement of environmental quality.

12/2020. Printed in Spain.

