



SEAT Ateca

The world doesn't stand still. And neither do you. Every challenge is an opportunity to try something new. Be curious. Keep pushing forward.

It's the way we live too. SEAT is a brand born in Barcelona. Inspired by colour and light. Fuelled by creative energy and optimism. We're here to make it easier for you to move the way you want to. So, where shall we go?

Where to next?



01 SEAT.

06 Live large

02 Your SEAT Ateca.

10 Exterior design
12 Interior design
14 Comfort
16 Connectivity
18 Technology
20 Safety

03 Your way.

24 FR trim
28 XPERIENCE trim
32 Style trim
36 Reference trim
38 Wheels
40 Colours
42 Upholsteries

04 Your accessories.

46 Final touches
48 Transport
54 Boot solutions
56 Protection
58 Safety

05 At your service.

62 SEAT Care
64 Environmental information



A true embodiment of versatility and freedom with a modern sportive design as standard and advanced tech features to get you out into the world larger than ever. Give yourself the space you need. Exploration fulfilled, with a bigger, bolder outlook. Ready for endless possibilities, where will it take you?

Live large.





The SEAT Ateca offers striking design and unbounded off-road character. With innovative connectivity features and advanced safety technology to make every journey a dream.

Adventurers,
seekers,
challengers.

Bring a little sporting sophistication to the party.

Boasting a larger front grille and 19" alloy wheels for better handling and performance. Hidden exhaust pipes framed in silver give the SEAT Ateca a subtly refined charm. All signed off with the hand-written name badge. The SEAT Ateca is bold and ready for any adventure it might take you on.



EXTERIOR DESIGN

Our global range of cars and product specifications varies from country to country. Please, visit your local SEAT website to know more about the product offer available for you.



Life-easing interior design.

User-focused with a cabin geared towards driver and passenger satisfaction. Make it the way you want it with personal touches. For Nordic style and the comfort of home, choose the XPERIENCE trim with its door panels and central console in a Light wood finish. The SEAT Ateca has more space so you can rest easy, sit back and enjoy every trip to the full.

Convenience all year round. The Climacoat heated windshield defrosts in under 3 minutes while reflecting the sun to maintain a comfortable interior temperature in summer, minimising air-conditioning consumption and reducing glare to improve safety and well-being. The heated steering wheel gives you increased comfort and control in the cold winter months and with the SEAT Ateca's ambient lighting you can set the right hue for your journey at any time of year.

Fully comfortable,
completely looked after.



The smarter way to connect.

Whether you're on the road or on the move, SEAT CONNECT gives you total control over your car. Your Ateca also comes kitted out with the technology you need to get the most out of every ride. Stay connected, stay in touch, stay on it with ease.



Complete peace of mind.

- The Breakdown Call feature automatically puts you in touch with our agents when you need assistance.
- Time for a service? Your Ateca will send all the relevant data ahead of your appointment.
- Speak to our Customer Care specialists directly from your cockpit. They're always at hand to offer support and solve any doubts you might have.



Full control in the palm of your hand.

- Lock & unlock your car remotely with the SEAT CONNECT app.
- See your Ateca's real-time location and the best way to get there.
- Receive anti-theft notifications* when your Ateca detects any interference.



Knowledge is power.

- Stay in the know about the road ahead. Online updates mean you can change your route if needed.
- Find the closest available parking spaces and petrol stations.
- Manage your music and playlists - the soundtrack is always ready for your adventure.

Remote Access & Online infotainment service clusters include a free-trial period. After this period, in order to keep enjoying the service a renewal is required.

*Function subject to optional equipment.

The more you see, the more you know. The larger 9.2" Navi System with SEAT CONNECT splits into 3 panels for easier access, and the 10.3" Digital Cockpit displays all your drive data within your line of vision, improving visibility while you focus on the drive ahead.

There's a whole new world to discover.





Pre-crash Assist.

Anticipating oncoming collisions, the Pre-Crash Assist feature prepares for impact by tightening safety belts and closing windows.

Enjoy worry-free driving.

Today's driver has more things than ever to watch out for on the roads. That's why the SEAT Ateca comes with the latest safety features to let you focus on what's important. The ride.



Travel Assist.

The Travel Assist features on the SEAT Ateca monitor your journey and use cameras to scan for upcoming traffic, lane markings, traffic lights, road signs and curves letting you drive with peace of mind.



Side Assist.

Overtaking and changing lanes doesn't have to mean straining your neck. If anything enters your blind spot, Side Assist warns you with a visual cue.

The SEAT Ateca comes available in 4 trims. The same robust design and bold spirit, but each with distinct cultivated subtleties, so you can find a style to suit whatever adventures you seek.

Have it your way.



Time for passion?

The FR trim offers optimum performance: lustrous, sportive design with a character to match. Energetic, powerful and vibrant. With Cosmo Grey detailing and dynamic blinkers. A chrome-framed simulated double-exhaust pipe and embossed fabric upholstery in the cabin — propelled forward by high-performance alloy wheels for serious driving euphoria.



Reinforced style.

Every little detail. A full-bodied, moulded bumper in Cosmo Grey with a sports-inspired exhaust pipe.



A hardy front grille.

It's all about how you go forward. Confidently cutting through with a powerful front grille.

FR trim.



Light the way.

Full LED headlights at both the front and rear with dynamic blinkers.



Propelled by innovation.

Exclusive 19" Machined AERO wheels in Cosmo Grey*.



SEAT CONNECT.

Complete access to SEAT CONNECT functionalities through the Navi System+*.



A sportive finish.

With a robust front grille, a lowered front end, Sport Cosmo Grey re-enforced bumpers to the front and rear, side sills and a set of dynamic mirror cases.

Standard equipment.

Safety:

- 7 airbags: 2 front, 2 front side, 2 curtain and 1 knee airbag
- Seat belt reminder
- 3-point seat belts in front and rear
- Cruise Control System (CCS) with speed limiter
- Electronic Stabilization Programme (ESP)
- Front Assist
- City Emergency Braking
- Pedestrian Protection
- Hill Hold Control
- Tiredness Recognition
- Child seat anchor for child seat system ISOFIX

Electronics:

- 2 USB type C illuminated ports in front and 2 in the rear
- SEAT Media System+ 8.25"
- 8 speakers
- Bluetooth®
- 2-zone Climatronic
- SEAT CONNECT for Media System+
- Keyless Advanced
- Power-adjustable and heated exterior mirrors with front passenger lowering function and Welcome Light
- Rear park distance control
- SEAT Drive Profile

Exterior:

- Exterior mirrors in body colour
- Sport bumpers in Cosmo Grey
- Wheel arches and side mouldings painted in body colour
- Simulated exhaust pipe with chromed frame
- Black roof rails
- Performance 18" 36/3 Alloy wheels in Brilliant Silver
- Dark-tinted rear windows
- Full LED headlights and tail lights with dynamic blinker
- LED front fog lights with cornering function

Interior:

- Pedals in aluminium
- Grey interior roof
- Multifunctional sport leather steering wheel with FR pin
- Vegan leather gearshift¹
- Nilo cloth with Dinamica® sport seats
- Illuminated door step with FR lettering
- LED interior ambient lighting
- Document holder under driver seat and pockets on backrest
- Centre armrest in front and rear

¹ Vegan leather available for manual engines. Leather gearshift knob for automatic engines.

Robust, reliable, quality.

The essence of off-road freedom and adventure blended with high-quality interior design features to give you complete comfort. Get out and explore with pure confidence, the XPERIENCE trim combines a robust front grille with dynamic side mouldings and a front spoiler in reflex silver for a bolder look. Inside the cabin? A select Nordic interior with finely crafted stitching and detailing — true home comfort no matter where you get to.



Organic illumination.

Out into the wide. Let it shine on in. A full spectrum, roof spanning window that bathes the SEAT Ateca's stylish interior in glorious natural light.



Drive Profile.

Adventure demands versatility. Driving modes fit for every road: Eco, Normal, Off-road, Snow or Sport, each profile influences engine responsiveness, steering, ambient lighting and engine sound, so you can always get the best out of your SEAT Ateca.



XPERIENCE trim.

Standard equipment.

Safety:

- 7 airbags: 2 front, 2 front side, 2 curtain and 1 knee airbag
- Seat belt reminder
- 3-point seat belts in front and rear
- Cruise Control System (CCS) with speed limiter
- Electronic Stabilization Programme (ESP)
- Front Assist
- City Emergency Braking
- Pedestrian Protection
- Hill Hold Control
- Tiredness Recognition
- Child seat anchor for child seat system ISOFIX

Electronics:

- 2 USB type C illuminated ports in front and 2 in the rear
- SEAT Media System+ 8.25"
- 8 speakers
- Bluetooth®
- 2-zone Climatronic
- SEAT CONNECT for Media System+
- Keyless Advanced
- Power-adjustable and heated exterior mirrors with front passenger lowering function and Welcome Light
- Rear park distance control
- SEAT Drive Profile
- **Convenience Pack:** Rain & light sensor, Electrochromic frameless interior mirror, Automatic Coming & Leaving Home function

Exterior:

- Exterior mirrors in body colour
- Off-road chromed bumpers
- Chromed roof rails and window frames and black wheel arch mouldings
- Wheel arches and side mouldings painted in black
- Simulated exhaust pipe
- Performance 18" 36/2 Alloy wheels in Brilliant Silver
- Dark-tinted rear windows
- Full LED headlights and tail lights with dynamic blinker
- LED front fog lights with cornering function

Interior:

- Grey interior roof
- Multifunctional sport steering wheel
- Vegan leather gearshift¹
- Nordic cloth with Dinamica® seats
- Illuminated door step with XP lettering
- LED interior ambient lighting
- Document holder under driver seat and pockets on backrest
- Centre armrest in front and rear



Ready for adventure.

Full LED headlights to the front and rear with dynamic blinkers*.



Seamlessly connected.

Complete access to SEAT CONNECT functionalities through the Navi System+*.



Primed.

Exclusive 19" Machined AERO wheels in Cosmo Grey*.



Off-road and rugged.

Off-road chromed bumpers and side sills in a Reflex Silver finish*.

¹ Vegan leather available for manual engines. Leather gearshift knob for automatic engines.

* This equipment is optional.

Right here
in the moment.

Complete with urban optimism, the Style trim exemplifies the confidence that comes from elegance and autonomy. Full LEDs, alloy wheels and simulated exhaust pipes, gracefully topped off with the Ateca name in handwritten lettering at the rear of the car.



Fully entertained.

Satisfaction en route. The updated, larger 8.25" Media System gives you easy integrated access to a range of functionalities: maps, music and connection to your smartphone.



Street style.

Exclusive 18" Machined AERO wheels in Nuclear Grey.

Style trim.



Modern grace.

Full LED headlights at the front and rear with dynamic blinkers.



At wheel warmth.

Harness complete control with the enhanced heated steering wheel*.



Contemporary touch.

Style on the out, style on the in. Plush fabric, Cloth Comfort upholstery: tactile and timeless. With adjustable front armrests for total comfort and sophistication.



Reinforcement.

Urban bumpers.

Standard equipment.

Safety:

- 7 airbags: 2 front, 2 front side, 2 curtain and 1 knee airbag
- Seat belt reminder
- 3-point seat belts in front and rear
- Cruise Control System (CCS) with speed limiter
- Electronic Stabilization Programme (ESP)
- Front Assist
- City Emergency Braking
- Pedestrian Protection
- Hill Hold Control
- Tiredness Recognition
- Child seat anchor for child seat system ISOFIX

Electronics:

- 2 USB type C illuminated ports in front and 2 in the rear
- SEAT Media System+ 8.25"
- 8 speakers
- Bluetooth®
- 2-zone Climatronic
- SEAT CONNECT for Media System+
- Keyless Go
- Power-adjustable and heated exterior mirrors with front passenger lowering function and Welcome Light
- Rear park distance control

Exterior:

- Exterior mirrors in body colour
- Door handles in body colour
- Black bumpers with chromed inserts
- Black window frames
- Dynamic 17" 36/1 Alloy wheels in Brilliant Silver
- Full LED headlights and tail lights
- LED front fog lights with cornering function

Interior:

- Grey interior roof
- Multifunctional sport leather steering wheel with XP pin
- Vegan leather gearshift¹
- Cloth Comfort seats
- Interior light in footwell
- Document holder under driver seat and pockets on backrest
- Centre armrest in front and rear

¹ Vegan leather available for manual engines. Leather gearshift knob for automatic engines.

Getting better every day.

Easy driving, robust and reliable all-round. Bold characteristics built to last, the Reference trim offers safety, space and access to a wide range of modern functionalities, an SUV for contemporary living.



Complete momentum.

Get there in style with 16" Brilliant Silver Alloy wheels as standard.



Cosy, relaxed driving.

It's all about the feel. With a leather steering wheel that augments driver comfort and makes every trip a dream.



Reference trim.

Wheels.

16"



DESIGN 16"
BRILLIANT SILVER
R

17"



DYNAMIC 17"
BRILLIANT SILVER
St



DYNAMIC 17"
36/1 NUCLEAR GREY MACHINED
St

18"



PERFORMANCE 18"
36/8 NUCLEAR GREY MACHINED
St XP

19"



EXCLUSIVE 19"
36/4 NUCLEAR GREY MACHINED
XP



EXCLUSIVE 19"
36/5 AERO NUCLEAR GREY MACHINED
XP

18"



PERFORMANCE 18"
36/2 NUCLEAR GREY MACHINED
St XP



PERFORMANCE 18"
BRILLIANT SILVER
XP



PERFORMANCE 18"
BRILLIANT SILVER
FR



PERFORMANCE 18"
36/3 COSMO GREY MACHINED
FR

19"



EXCLUSIVE 19"
36/9 COSMO GREY MACHINED
FR



EXCLUSIVE 19"
36/6 AERO COSMO GREY MACHINED
FR



EXCLUSIVE 19"
36/7 COSMO GREY MACHINED¹
FR



EXCLUSIVE 19"
36/10 GLOSSY BLACK
FR

Reference **R**
Style **St**
XPERIENCE **XP**
FR **FR**
Serial **■**
Optional **■**

¹With decorative inserts.

Colours.



BILA WHITE¹ R St XP



NEVADA WHITE² R St XP FR



BRILLIANT SILVER² R St XP



RODIUM GREY^{2,4} R St XP FR



GRAPHITE GREY^{2,5} St XP FR



MAGIC BLACK² R St XP FR



DARK CAMOUFLAGE³ St XP FR



LAVA BLUE² R St XP



ENERGY BLUE¹ R St XP FR



VELVET RED³ St XP FR

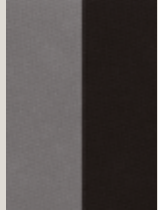
Reference **R**
Style **St**
XPERIENCE **XP**
FR **FR**
Serial **■**
Optional **■**

¹Soft
²Metallic
³Special Metallic
⁴EOP wk47
⁵SOP wk50

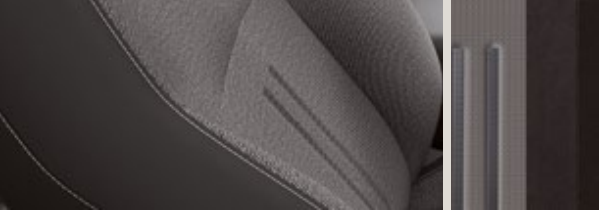
* Exterior mirror in
Cosmo Grey for FR trim



Upholsteries.



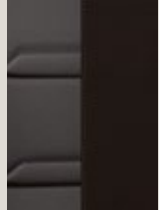
CLOTH BLACK / GREY (AS) R



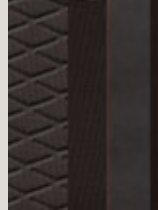
CLOTH BLACK / DALLAS / OLOT (BK) St



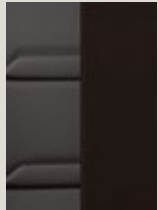
DINAMICA® BLACK¹ (BK+PL7) St



LEATHER BLACK¹ (BL+WL1) XP



CLOTH NILO / DINAMICA® BLACK (BM) FR



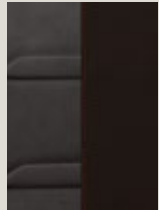
LEATHER BLACK¹ (BK+WL1) St



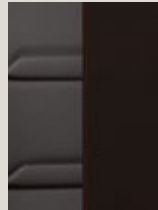
CLOTH NORDIC / DINAMICA® BLACK (BL) XP



DINAMICA® BLACK¹ (BL+PL7) XP



DINAMICA® BLACK² (BM+PL7) FR



LEATHER BLACK² (BM+WL1) FR

Reference R
Style St
XPERIENCE XP
FR FR
Serial FR
Optional FR

¹ Dark Silver stitching for Style and XP trims.
² Lava Red stitching for FR trim.



Make it yours with the intricate details and accessories that you'll need for the road ahead. Your choice of customisation features on both the exterior and interior of your SEAT Ateca.

Those tiny touches
that matter.

Final touches.

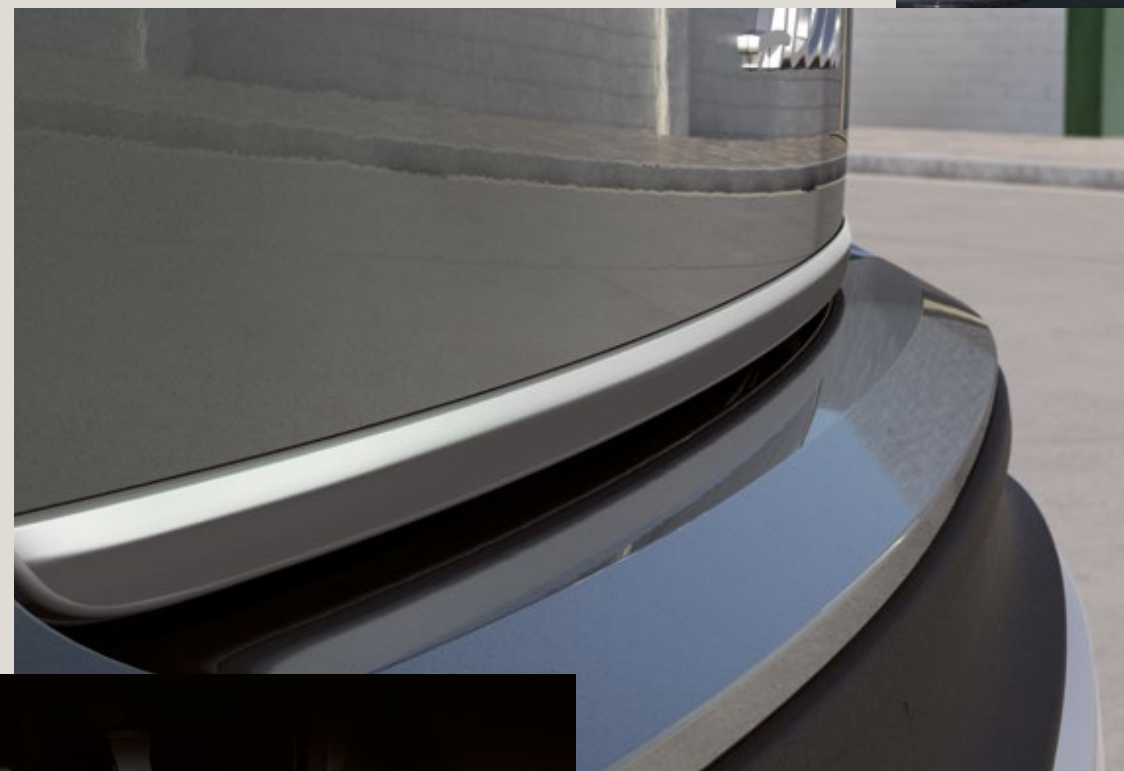
Properly topped off. Add those final touches to your SEAT Ateca's interior and exterior.

Hatch door moulding.

From front to back, the SEAT Ateca is designed to expand. Hatch door moulding brings another dimension to your journey.

Aluminium pedals & footrest.

Enhance the sporty driving feeling. Aluminium pedals and matching footrest incorporate stainless steel and non-slip rubber to improve grip and finish off the sporty look of your cockpit.





Transport.

Taking on the road on 2 wheels? Both of our bike racks are a perfect fit. Tailored especially to your SEAT Ateca and compliant with strict quality tests.

Towing Bike Rack.

Extra wheels don't need to mean more work. Aluminium rails on the tow bar support any type of bicycle.

Bike Rack.

Going off the beaten path? Bring your bicycle with you in this easy-to-mount and configurable bike rack. Quick and easy fastening. With long-lasting care for your bike's frame tubes.

Transport.

Roof Bars.

Front and rear transport bars easily attach to the roof and come with a secure anti-theft system.

Surf Rack.

Steady breaks rolling in? Load up your gear and jump right in. The rack adapts perfectly to the shape of your surfboard and allows you to carry two along.

Roof Box.

Big plans? These weather-resistant roof boxes come in a range of 400l to 460l, support up to 50 kg of weight and use a double-opening system so you can easily access your gear. Easily attach it to the roof bars, even with a sunroof. Transport solutions taken care of.





Transport.

Ski Rack Xtender.

No need to strain your back to load your skis. The Ski Rack Xtender slides out easily for convenient loading and safe transport to the snow.

Ski Rack.

Trip to the slopes? This Ski Rack is specially designed and perfect for family use. Holding 4-6 skis or 2-4 snowboards.

Boot solutions.

Keeping all your stuff stored safe, sound, in order and just where you want it to be. No one likes a messy boot. SEAT's Boot Accessories keep the balance just right.

Boot organising net.

Like staying organised? Flexible black boot nets help you arrange and properly secure your luggage.

Boot organiser.

This aluminium divider makes the most of the space in your SEAT Ateca's luggage compartment, ensuring that everything arrives at your destination in perfect condition.

Reversible boot tray.

Protect your SEAT Ateca with this easy to secure, reversible boot tray. Keep dirt and liquids away from whatever's in your boot.





Protection.

Rear bumper protective moulding and multifunctional base & net.

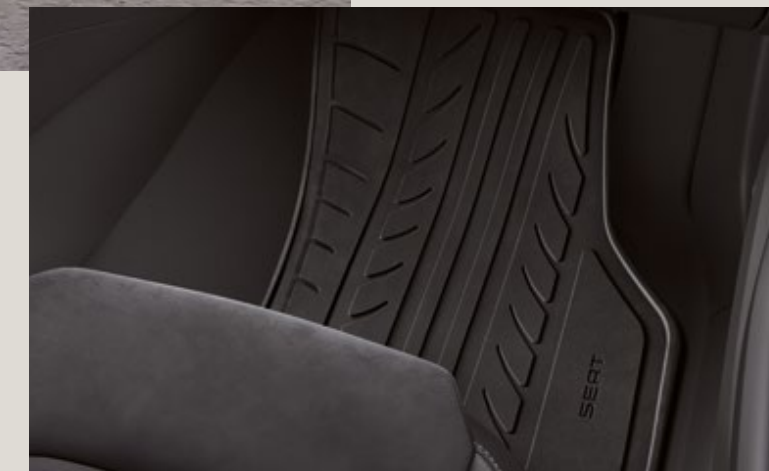
Keep it looking fresh and clean. The protective moulding stops you from scratching your bumper. And with the multifunctional base and net off to one side of the boot, all your small essentials can be kept within easy reach.

Front and rear mudflaps.

The SEAT Ateca is built for exploration. So, adding the specially adapted front and rear mudflaps to your set-up will guard and protect your car from mud and flying debris while you're out there.

Rubber floor mats.

It's your look. Make it last. Waterproof rubber mats add extra grip and protection. Or try textile for even more elegance.



Safety.

Bring your favorite passengers along for the ride while keeping them safe and secure en route.

Separation grille for pets.

This removable grille separates the car compartment from the boot area, providing extra protection for pets along for the ride.

KIDFIX 2S 2-in-1 car seat.

Keep your most precious passengers extra safe. The Kidfix 2S has a V-shaped backrest with adjustable SICT system. It can be adapted to the right size to allow for more space as your child grows and provides exceptional protection against side impacts. For children from 3.5 to 12 years.



Life's too short to sweat the small stuff. The experts in our SEAT Service team use only SEAT Genuine Parts to keep your SEAT Ateca at its best – and you at your boldest.

Bolder living starts here.



Life's for living.

With SEAT CARE, you benefit from a package of SEAT After Sales services at a fixed and competitive monthly rate. Value for money, with the service you expect. Starting from XX€ / month, you can save up to 50% compared to standard costs. No worries. For more fun.



Go the extra mile. We've got your back.

The SEAT Warranty Extension lets you extend your 2-year manufacturer's warranty for 1, 2 or 3 years, or up to 100,000 km — whatever comes first. And if your car is new, the warranty comes included. Easy. Cost-effective. Ready for bolder living.



Whatever you need. Just ask.

Want a tow? More fuel? On-the-spot repair? SEAT Mobility Service is here for you. 24/7. Everywhere in the EU, plus most neighbouring countries. For up to 10 years. This is complete, reliable roadside assistance. And best of all? If your SEAT is new, you get 2 years free.



Play harder. We'll keep you on track.

SEAT Insurance is tailor-made to your car. To make moving forward easy. Our 24-hour customer service and official workshops using only SEAT Genuine Parts get you back on the road. Vandalism or theft? No problem. We're your ride.



Challenge ahead. Worries behind.

Live life to the fullest. SEAT Service & Maintenance contracts cover most services in the SEAT Service Programme for the first 3, 4 or 5 years of ownership. Available in Basic or Premium, with options for financing. So you can put your positivity into what really matters.



Our global range of cars and product specifications varies from country to country. Please, visit your local SEAT website to know more about the product offer available for you.



Environmental information.



Aerodynamics

Optimised design throughout the bodywork, wheels and cooling system improves vehicle aerodynamics.



Renewable and recycled materials

Use of renewable materials (cotton, natural rubber and cellulose) and recycled materials (plastics) in various parts of the vehicle.



SEAT Eco Drive Profile

ECO mode allows a driving style that modifies engine and transmissions parameters in order to reduce fuel consumption and emissions.



Lighting

Headlamps are 100% LED and all rear lamp versions include LED Technology (the High Plus is 100% LED), reducing significantly power consumption and increasing life and effectiveness of the lamp.



Engines

• **Diesel:** Some 2.0l Diesel engines allow the use of R100 fuel. R100 is made from 100% renewable raw material (Hydrotreated Vegetable Oil, HVO), achieving a reduction of up to 90% in CO₂ emissions during its production, compared to a conventional fuel.



Acoustics

All versions incorporate a double-seal system on the doors, which reduces noise levels and enhances comfort.



Tyres

Low-resistance tyres provide a reduction in CO₂ emissions.



Bodywork

Use of ultra-high strength steel, which together with hot stamping technology, permits a reduction in thicknesses and weight without loss of performance.



Circular economy

We are advancing in several initiatives and actions related to the circular economy throughout the entire life cycle of our vehicles, aiming to be more efficient, minimise waste and reduce our environmental impact.

Move to ZERO, SEAT's environmental mission



Climate Change.



Resources.



Air Quality.



Environmental compliance.



SEAT is committed to a policy of continuous product development and reserves the right to make changes to specifications, colours and prices without notice. The information in this brochure can therefore be given as guidance only. While SEAT makes every effort to ensure that specifications are accurate at the time of publication, you should always check with your authorised SEAT Partner for the latest information. Due to limitations of the printing process the colours reproduced in this brochure may vary slightly from the actual paint colour and material. This vehicle and all its parts, as well as the original spares, were designed according to the Legal Regulations governing the prevention and minimisation of Environmental Impact, through the use of recycled/ recyclable materials, with measures taken to achieve suitable recycling for the conservation and improvement of environmental quality.

10/2023. Printed in Spain.

